



P-EDMS 3D VISUALIZATION VIA UPV USER TRAINING GUIDE

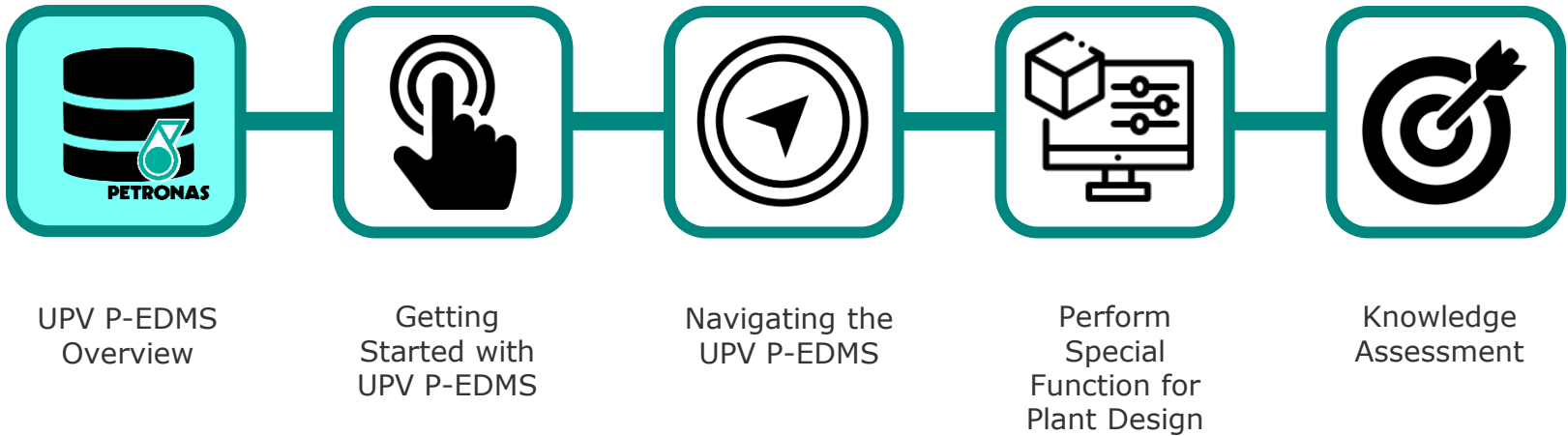
Presentation to
DD.MM.YY



© 2024 Petroliam Nasional Berhad (PETRONAS)

All rights reserved. No part of this document may be reproduced in any form possible, stored in a retrieval system, transmitted and/or disseminated in any form or by any means (digital, mechanical, hard copy, recording or otherwise) without the permission of the copyright owner.

UPV P-EDMS OVERVIEW





► Benefits of using 3D model

Visualization

- It provide a visual representation of the plant operation, enabling operators to better understand the layout, equipment placement, and overall structure.

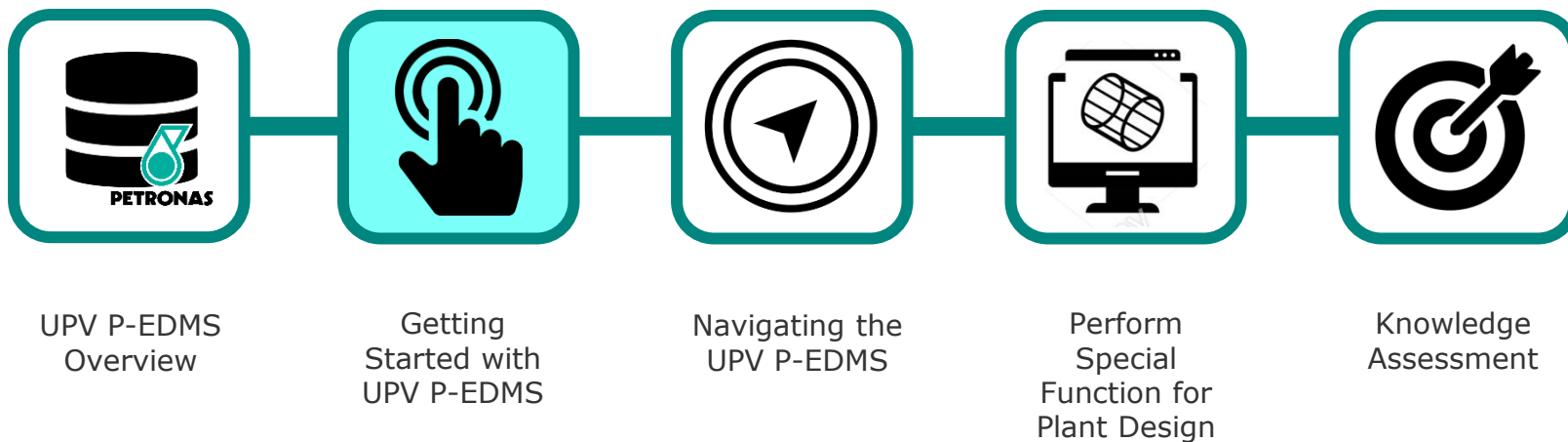
Designing

- Engineers have the ability to do sketch on 3D model and planning for EMOC

Training

- serve as valuable training tools for operators, allowing them to familiarize themselves with plant layout, equipment, and processes in a virtual environment. This helps in reducing training time and costs while improving operator competency and safety.

GETTING STARTED WITH UPV P-EDMS

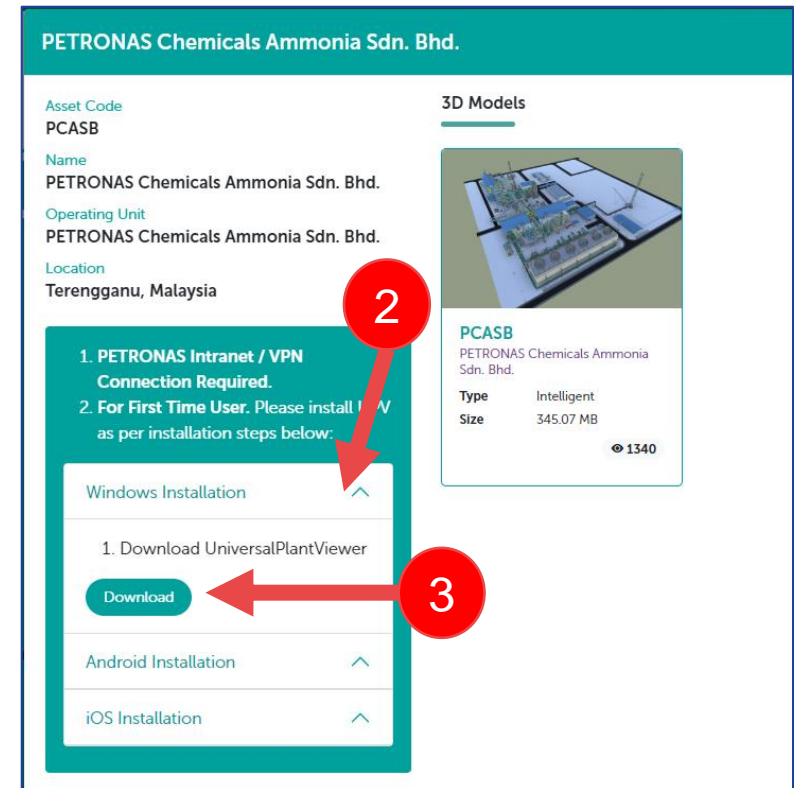
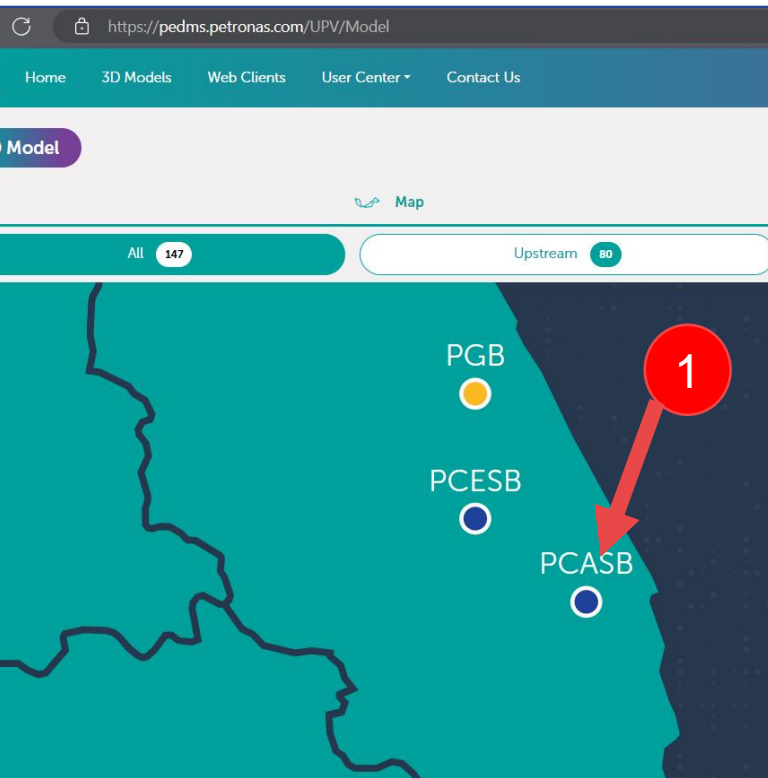


DOWNLOAD (FIRST TIME USER)



For First Time Desktop User

1. Navigate to PEDMS homepage <https://pedms.petronas.com/UPV/Model> and click at any OPU/project site that you want to access
2. Expand "Window Installation" on left panel
3. Click **Download**



DOWNLOAD (FIRST TIME USER)



https://pedms.petronas.com

- Home
- 3D Models
- Web Clients
- User Center ▾
- Contact Us



InSights Search
IS NOW LIVE

P-EDMS New Insights Search is now Live



P-EDMS New InSights Search

23 January 2024



New P-EDMS Feature Coming Soon

15 January 2024



Upstream Upskilling

02 January 2024

[See More ▶](#)

Videos



© 2023 - PETRONAS Engineering Data Management System. For any technical issues or enquiries, please contact [PETRONAS ICT Service Desk](#)

ACCESSING UPV PEDMS 3D MODEL



To login PEDMS UPV PEDMS 3D MODEL

1. Open a Microsoft Edge browser window.
2. Enter the URL [P-EDMS | Official Page \(petronas.com\)](https://pedms.petronas.com) > Click at 3D Models on menu bar
3. Click **PEDMS(or any model)**
4. Click **Open CAXperts Universal Plant Viewer**

P-EDMS | Official Page
https://pedms.petronas.com

3D Models Web Clients InSights User Center Contact Us

PETRONAS Engineering Data Management System

Enhanced Search coming your way!

Easier! Faster! Friendlier! Customizable

Multiple keywords enabled with personalized view!
New Enhanced Search is Coming Your Way

P-EDMS
More Than a Repository
P-EDMS | More Than a Repository

Azolla
Site is now LIVE
AZOLLA site is now LIVE

META
Site is now LIVE
META is now LIVE!

BASIL
Site is now LIVE
BASIL is now LIVE!

See more

P-EDMS Insights P-EDMS 3D laser

Service Announcement

Schedule Maintenance: SAP & Non-SAP Applications 20 Oct 2023
21 Oct 2023 (8 PM) to 22 Oct 2023 (6 AM)

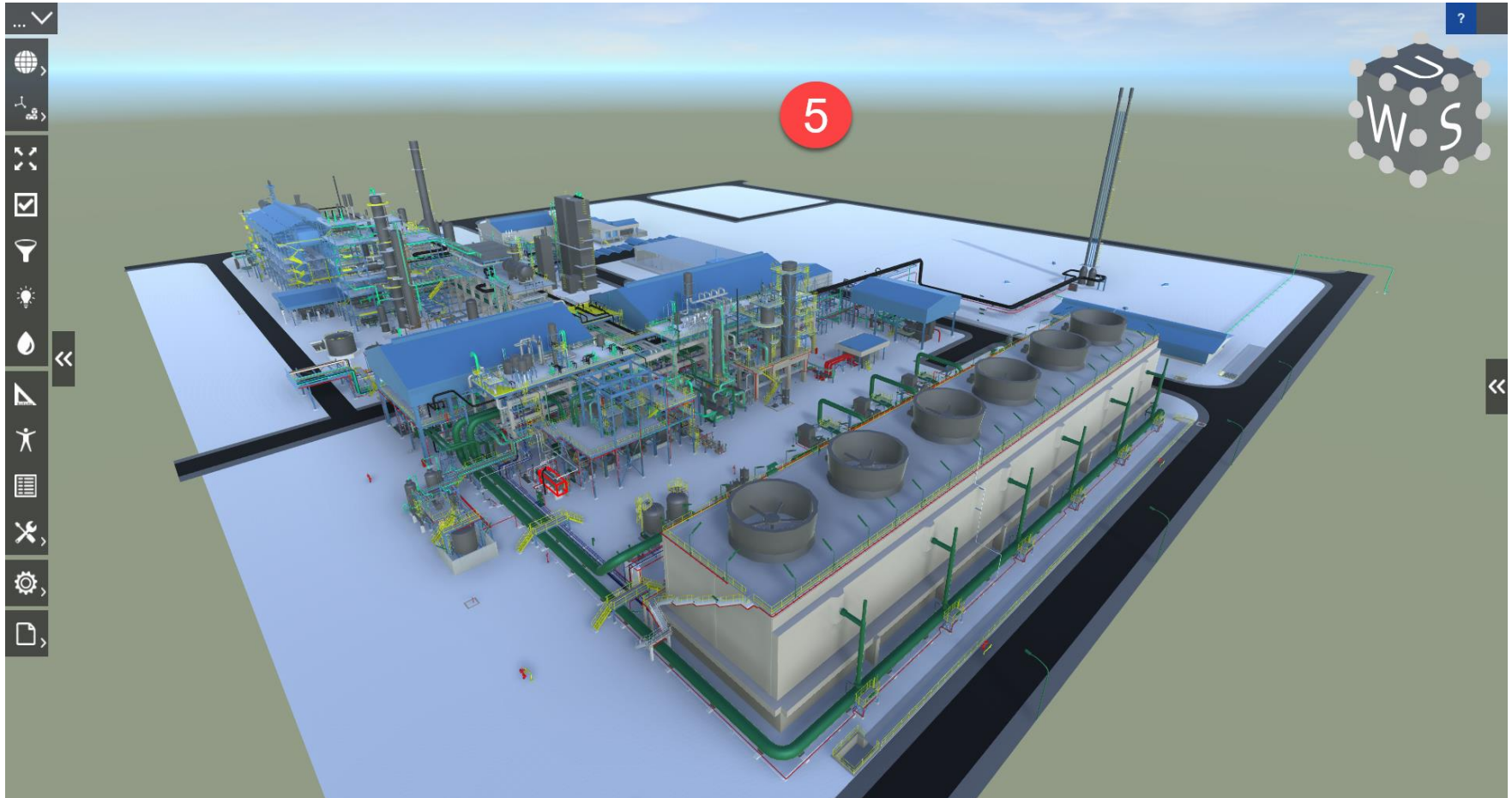
© 2023 - PETRONAS Engineering Data Management System. For any technical issues or enquiries, please contact PETRONAS ICT Service Desk

LOG IN PEDMS PEDMS 3D MODEL

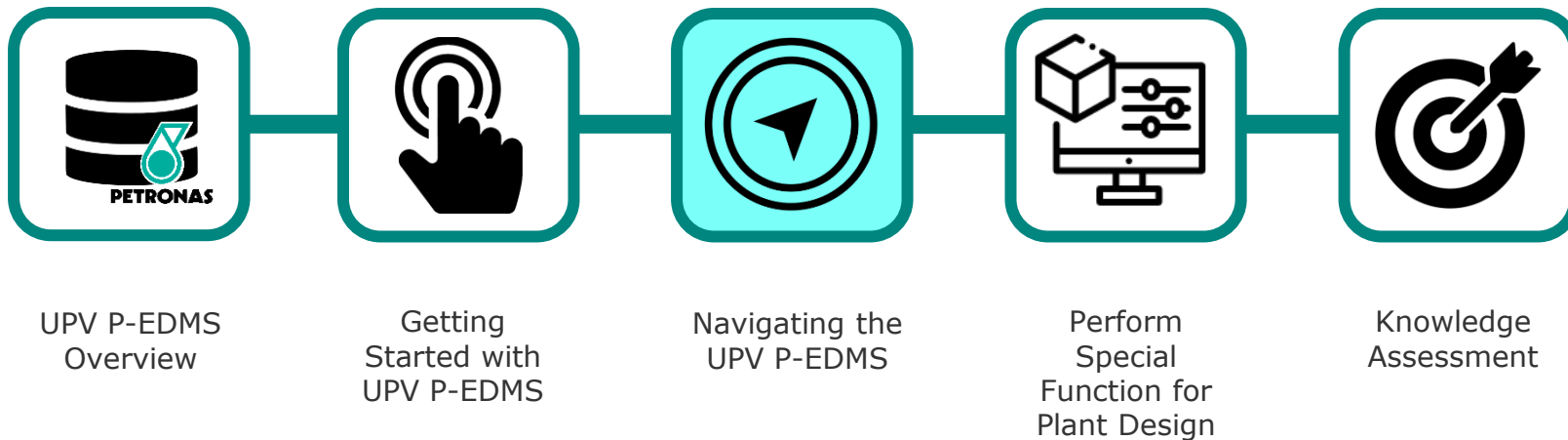


To login PEDMS PEDMS 3D MODEL

5. Universal Plant Viewer will automatically launch on your desktop.



NAVIGATING THE UPV P-EDMS



INTRODUCTION TO THE GRAPHICAL INTERFACE



Toolbar (Left):

- Camera Modes
- Clipping Modes
- Camera Fit
- Object Visibility
- Show Selected Only
- Highlighting
- Clouring
- Measuring
- Additional Objects
- Custom Attributes
- Tools
- Settings
- File Management

Top Bar:

- Breadcrumb Hierarchy: 3D > DemoPlant_2 > Plant A > Sulphur Recovery... > Recovery Stage 1-A > U02A-Equipment... > U02A-Equipment... > D-241 > NULL
- Common Views Cube
- Search: A 123F for P 123-ABC

Right Panel (Search Results):

Attributes	Files
1 object selected	
2 links found	
Equipment List	
4 drawings found	
LQP Layout Plan-Recovery Stage 1 - 4,500 to 12,000 m.sha	
LQP Layout Plan-Recovery Stage 1 - 0 to 4,500m.sha	
Piping Layout Plan-Recovery Stage 1 - 0 to 4,500m.sha	
Piping Layout Plan-Recovery stage 1 - 4,500 to 12,000 m.sha	
2 documents found	
Equipment Documentation	
Maintance Instruction	
1 IntelliPIDs found	
Sulphur Recovery Area/Recovery Stage 1 - U02-004	
UPV	
Name	D-240
Area	Sulphur Recovery Area-A
System	
Assembly	D-240
Path	
C. Element	#2F75B5
Color	
C. VisibleColor	#2F75B5
Color	
Construction Type	New
Date	1/19/2018 12:36:59 PM
Created	
Date Last	1/19/2018 1:00:50 PM

Central Model:

- Selected Object: U02-004
- Additional Context Menu
- Minimap

Bottom Bar (Tabs):

- 3D Sketch
- U02-003
- Piping Layout Plan-Recovery Stage 1 - 0 to 4,500m.sha
- CV-005
- Settings

MOUSE NAVIGATION



Click and Hold

To rotate the Model left, right, up and down.

Scroll Up and Down

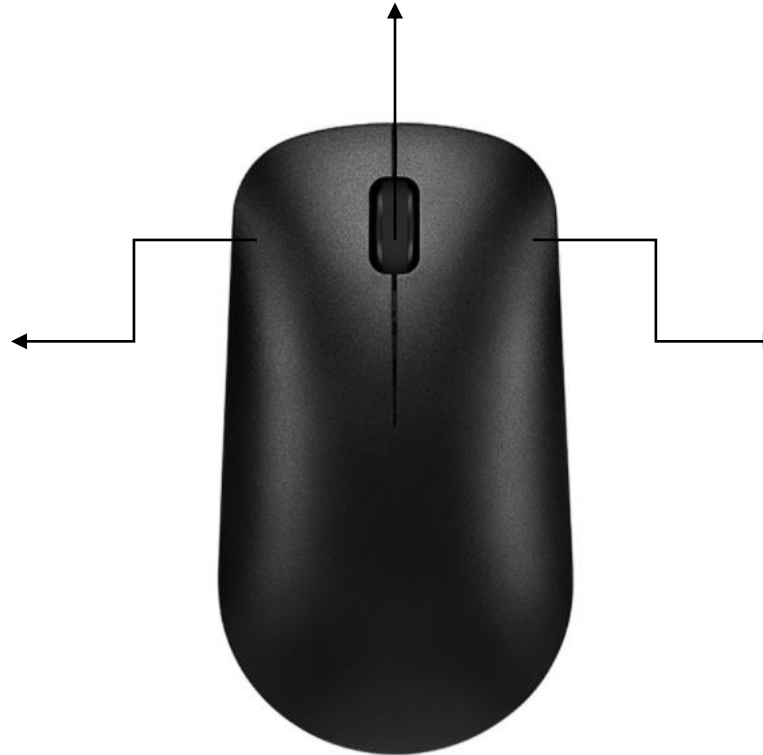
To zoom in and out.

Click and Hold

To rotate the Model left, right, up and down.

Double Click

To center the selected object.



Click and Hold

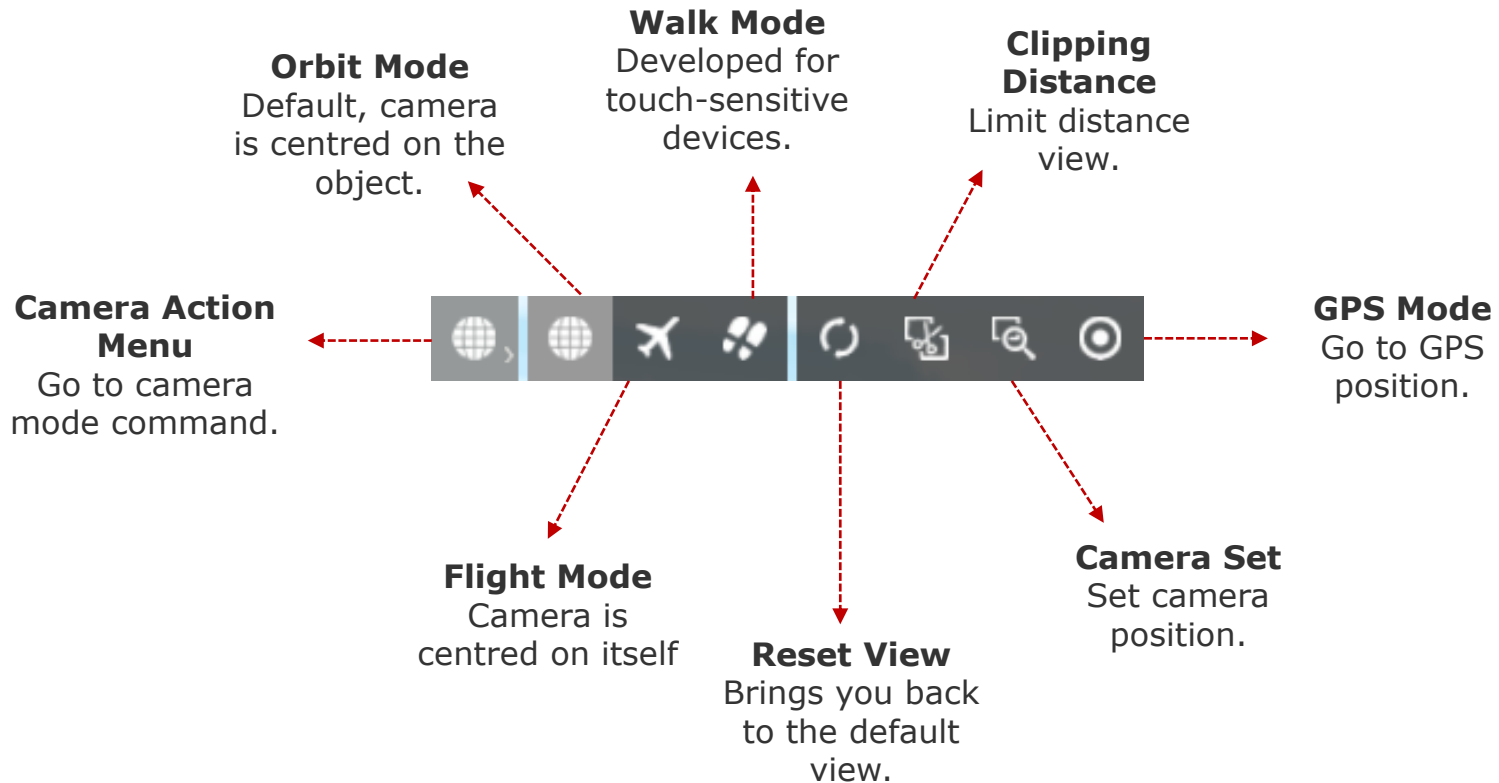
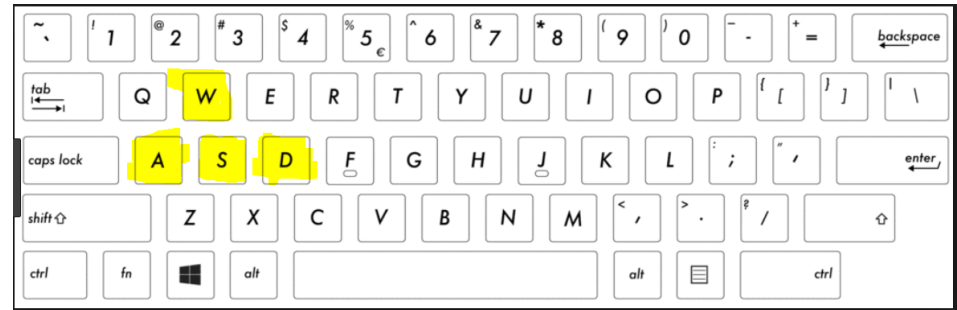
To zoom in and zoom out.

CAMERA MODES



Camera Movements

Notes: Navigate the camera with click and drag on your mouse, W, A, S, D, and the arrow keys on your keyboard and one to three fingers on your touch-sensitive device. Select an object by clicking on it. Centre it with a double click. The camera will rotate around the selected object.

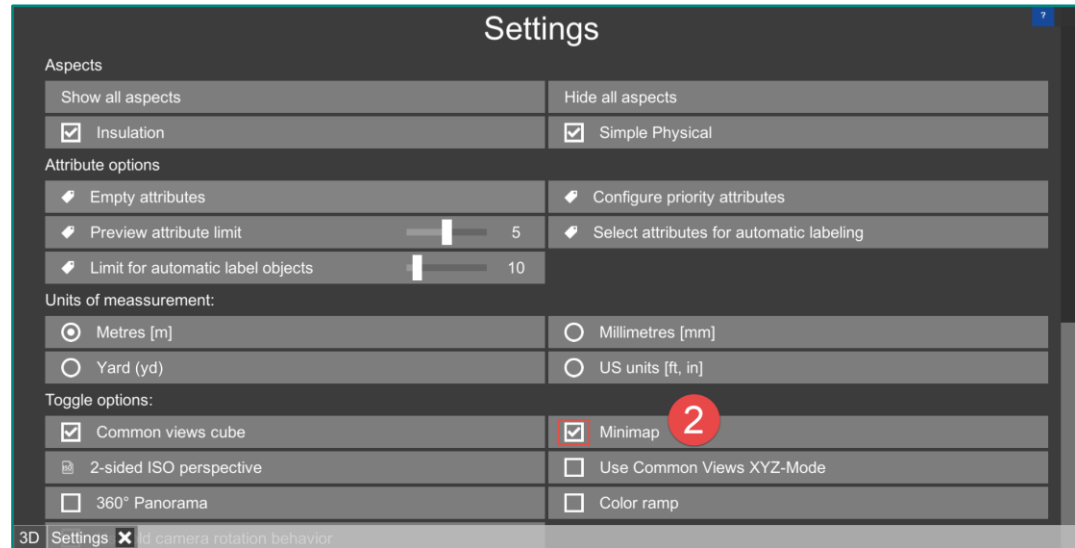
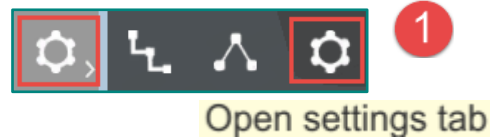




Add Mini Map to Lower Right Corner on Screen

1. Click Settings Action Menu Button > click open settings tab.
2. Tick 'Minimap' under toggle options at settings menu to quickly navigate through your model.

Notes: Move (left mouse button) and rotate (right mouse button) the camera, zoom in and out with the magnifying glass icons and adjust the camera's height with the bar on the right. By default the mini map is switches off.



UI SETTING



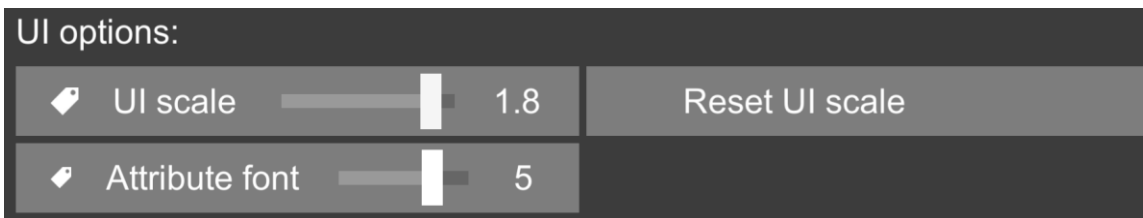
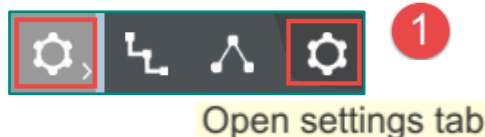
UI Options

1. Click Settings Action Menu Button > click open settings tab.

2. Adjust your 'UI scale' under UI options at setting menu.

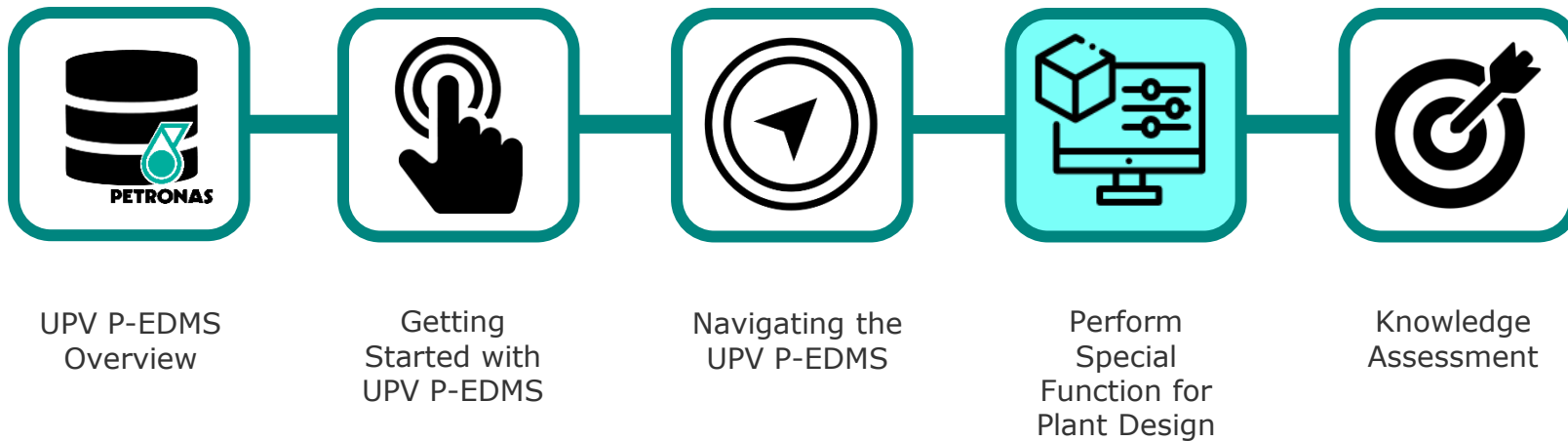
Notes: Click 'Reset UI scale' brings you back to the default UI scale.

3. Adjust your 'Attribute font size' under UI options at setting menu.



ATTRIBUTES	
1 object selected	
>>	SP3d
>>	SP3d2
>>	SP3d3
>>	SP3d4
Constructio	New
n Type	
Date Created	11/4/2013 10:30:07 AM
Date Last Modified	3/10/2014 3:29:28 PM
FileName	TCOT.vue
Linkage	226 844 21111 1060
Location	E 3140 ft 4 in N 2504

PERFORM SPECIAL FUNCTION FOR PLANT DESIGN



SEARCH FOR TAG (EQUIPMENT)



3D PCASB UTIL & FW U52 SKID A3-5202 Equipment NULL Object 00004e2e...

1 Type tag number in search bar and hit "enter" on your keyboard

2 Click on tag number and it will automatically zoom to the object

3 Object will be highlighted in red box

P3-5205A

3D

Unmatched Elements
Equipment ID (1)
P3-5205A

Equipment ID

Attributes Files
1 object selected

4 links found

Show GA

Show Info Map in P-EDMS

Show ISO

Show P&ID

Equipment ID	P3-5205A
RBI Risk Analysis (EQUIPMENT)	X
ECA Risk (EQUIPMENT)	X
Make	X
Rated Shaft Power (kW)	X
Rated Voltage (Volts)	X
Rated Speed / Sync Speed (r/min)	X
Connection Star / Delta	X
Rated Current (Amps)	X
Full Load Torque (Nm)	X
Bearing Type (DE/NDE)	X
Rated Power (kVA)	X
Manufacture	X

SEARCH FOR TAG (EQUIPMENT)



LINKING WITH TECHNICAL DOCUMENT



UniversalPlantViewer (6.3.2203.2403) - https://p-edms4.petronas.com/UPV-PCASB-AB/...

3D PCASB UTIL U52 PIPING Equipment

1 Select the object

2 Click "Show Info Map in P-EDMS"

Attributes Files

1 object selected

4 links found

- Show GA
- Show Info Map in P-EDMS
- Show ISO
- Show P&ID

Equipment ID	V3-5201
RBI Risk Analysis (EQUIPMENT)	LOW
ECA Risk (EQUIPMENT)	MEDIUM
Make	X
Rated Shaft Power (kW)	X
Rated Voltage (Volts)	X
Rated Speed / Sync Speed (r/min)	X
Connection Star / Delta	X
Rated Current (Amps)	X
Full Load Torque (Nm)	X
Bearing Type (DE/NDE)	X
Rated Power	X

P-EDMS™ Web Client

https://pedms...

Search...

Not syncing

azwani...

3 Result go to Info Map in PCASB P-EDMS

Tag Equipment V3-5201

369 Document

SEARCH FOR PART (ELBOW)



1 Type part name that would like to search and hit "enter" on your keyboard

2 Click on the description to show total amount of searched item.

3 Number of the total elbows available in this model.

4 Object results found

elbow

3D

Unmatched Elements

Name (15)

Description (72)

Description

72 17986

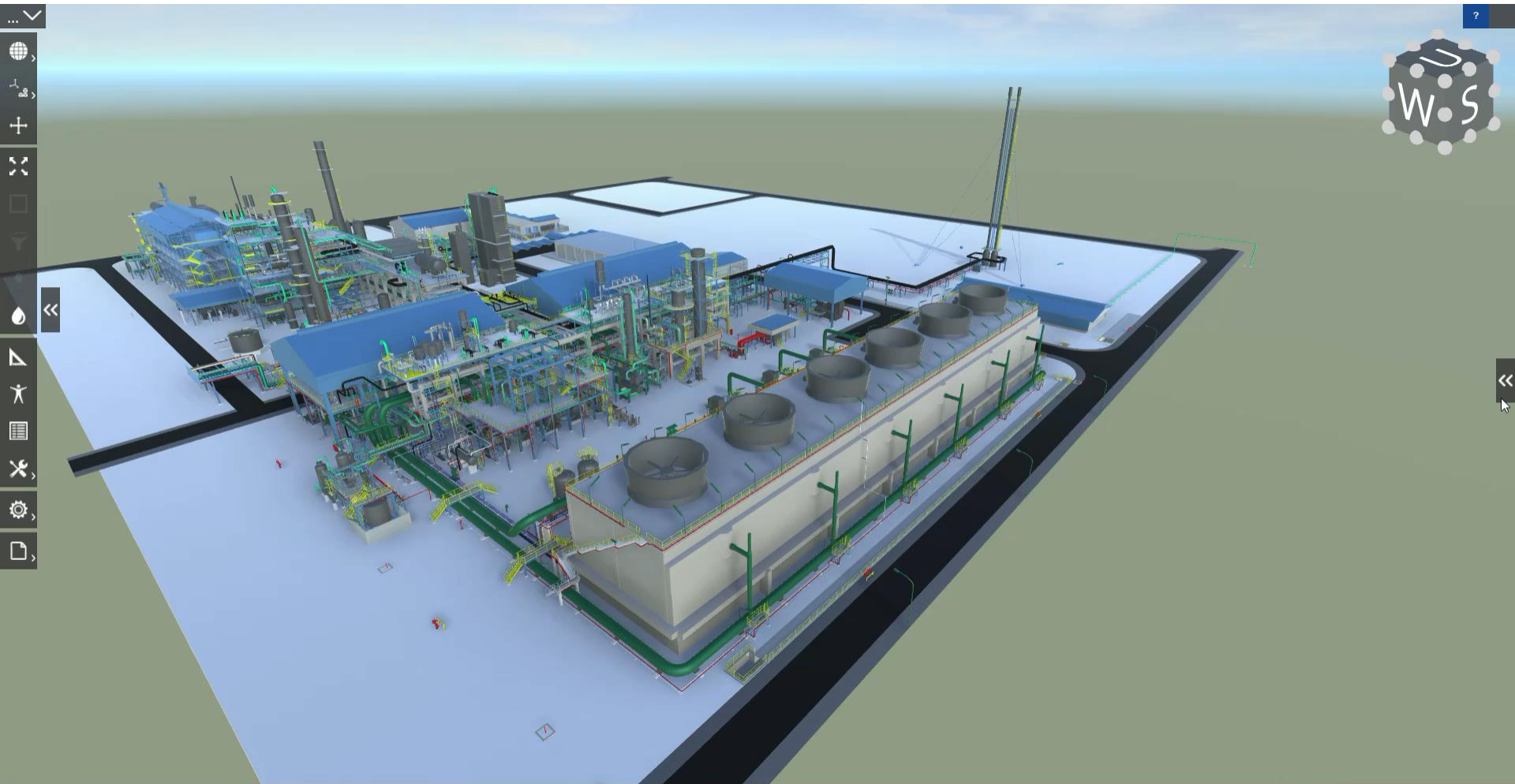
Attributes Files

17986 objects selected

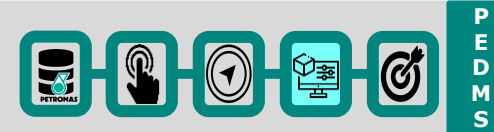
SEARCH FOR PART (ELBOW)



P
E
D
M
S



SEARCH FOR TAG (PIPING)



UniversalPlantViewer (6.3.2203.2403) - https://p-edms4.petronas.com/UPV-PCASB-AB/PCASB-UPV/ (25/7/2022)

3D PCASB OXO U13 PIPING Pipelines CWR-313086 6"-CWR-313086-... Object 0013885...

20"-PG-312018-3309Y-IH

3D

Unmatched Elements

Line ID (1)

System Path (1)

Line ID

Attributes Files

49 objects selected

4 links found

Show GA

Show InfoMap

Show ISO

Show P&ID

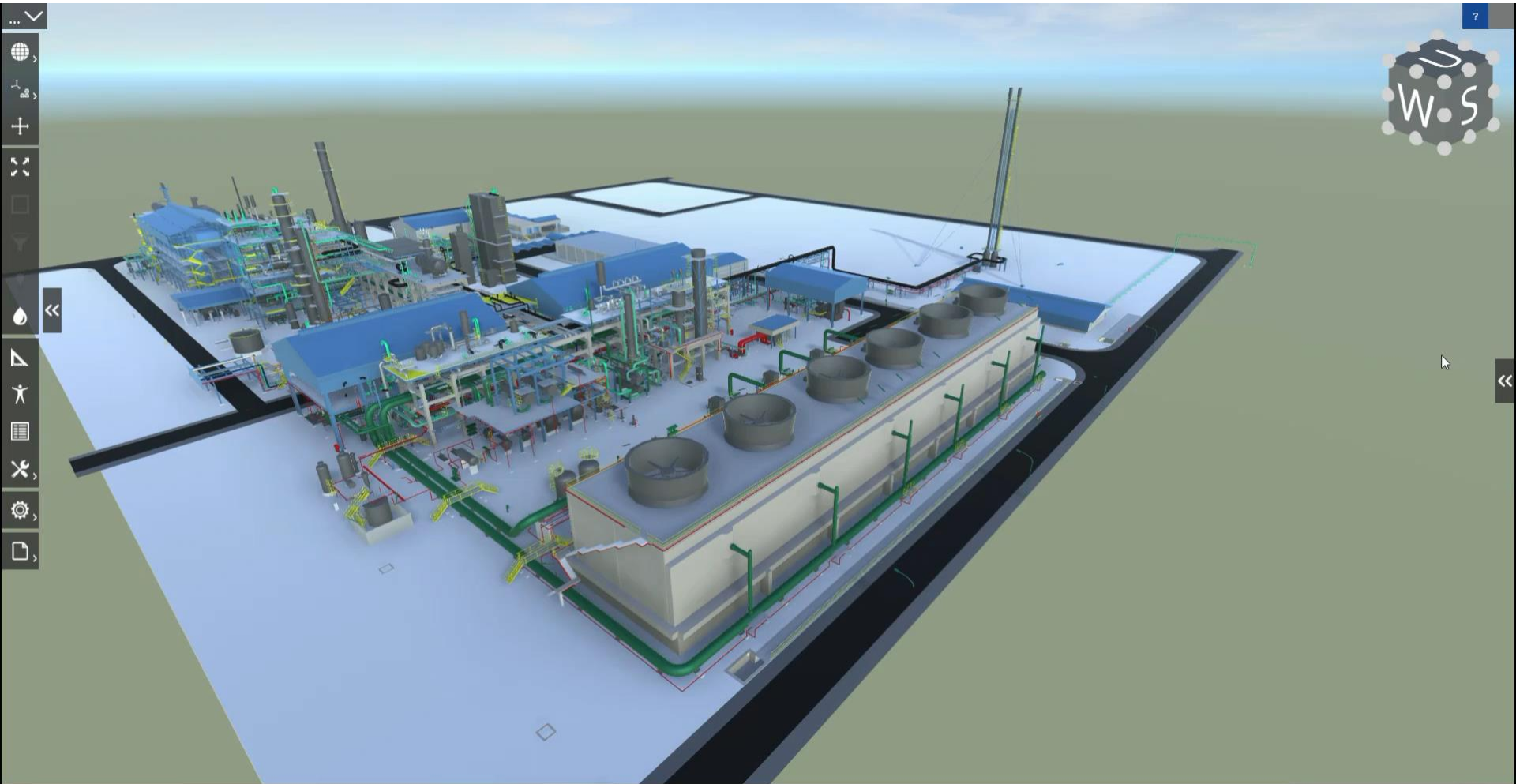
Line ID	20"-PG-312018-3309Y-IH
RBI Risk Analysis (PIPING)	LOW
ECA Risk (PIPING)	VERY HIGH
Insulation Material	FBG
Insulation Purpose	H
P-EDMS	PIPERUN
Description	

1 Insert your tag number > hit "enter" on your keyboard

2 Click Line ID

3 Object result found

SEARCH FOR TAG (PIPING)

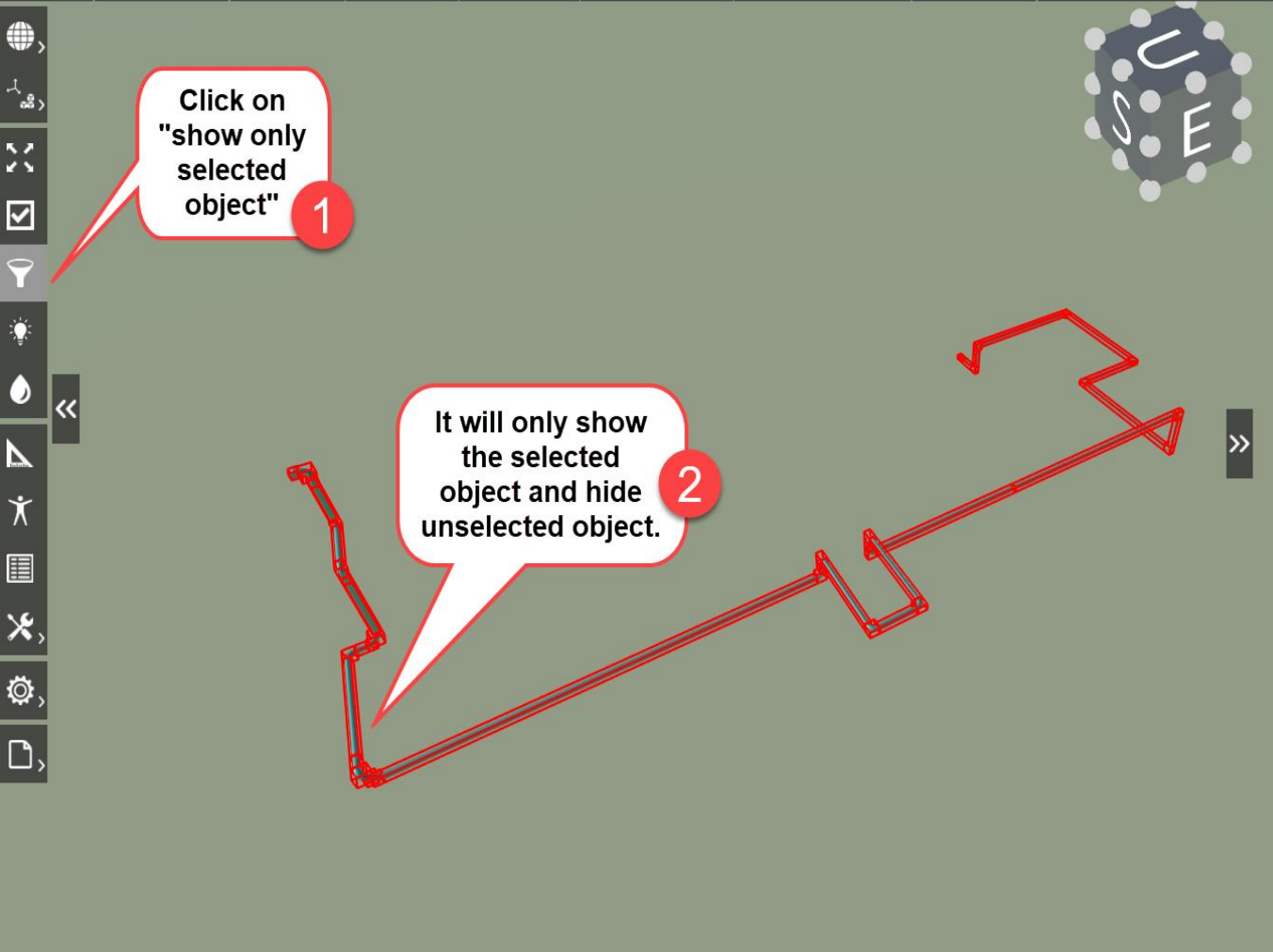


SHOW SELECTED OBJECT



UniversalPlantViewer (6.3.2203.2403) - https://p-edms4.petrinas.com/UPV-PCASB-AB/PCASB-UPV/ (25/7/2022)

3D ▾ PCASB ▾ OXO ▾ U12 ▾ SKID ▾ K3-1203 ▾ Equipment ▾ NULL ▾ Object 00004e2e... ▾



20"-PG-312018-3309Y-IH ▾

3D

Unmatched Elements

Line ID (1) ▾

System Path (1) ▾

Line ID

Attributes Files

49 objects selected

4 links found

Show GA

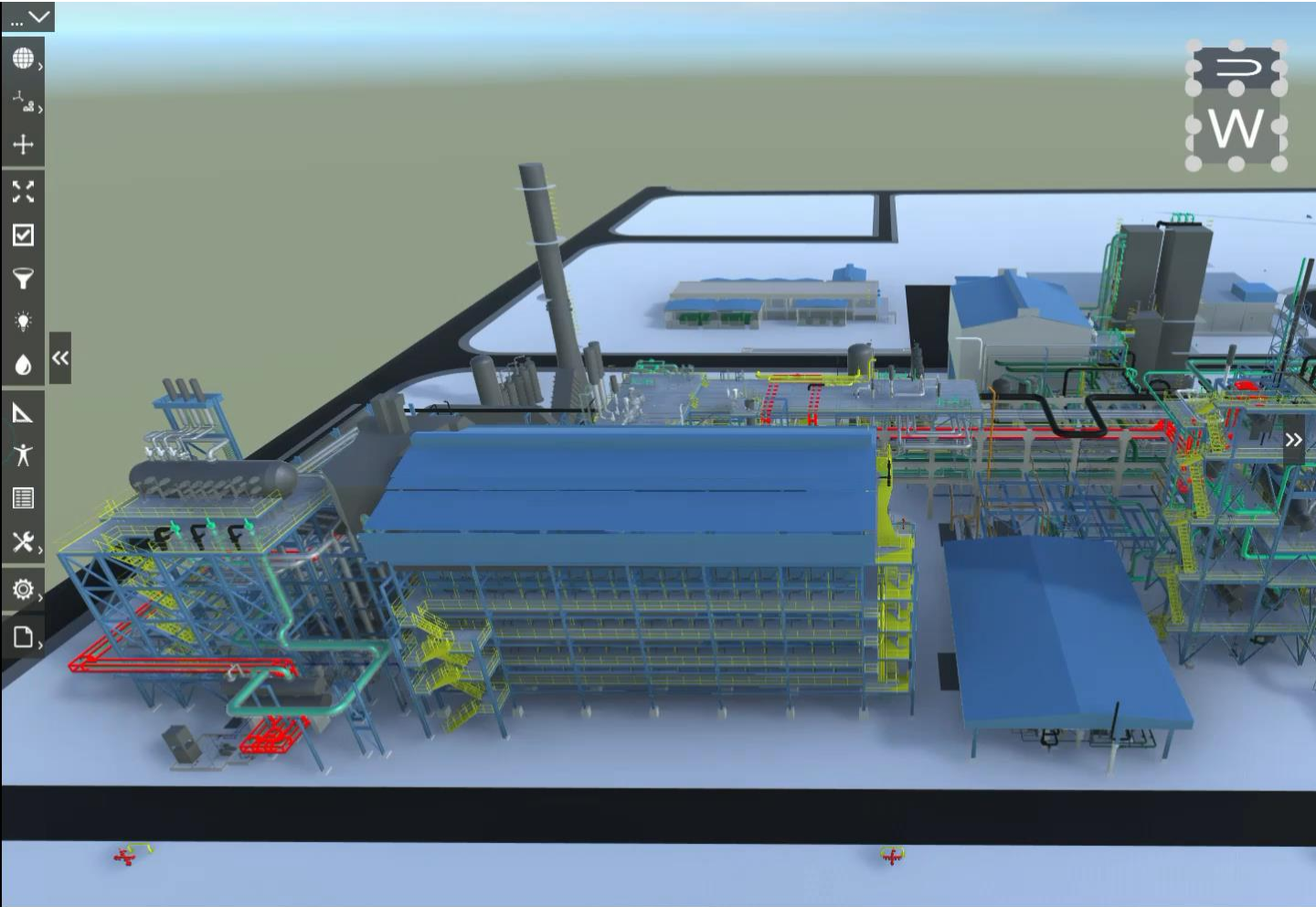
Show InfoMap

Show ISO

Show P&ID

Line ID	20"-PG-312018-3309Y-IH
RBI Risk Analysis (PIPING)	LOW
ECA Risk (PIPING)	VERY HIGH
Insulation Material	FBG
Insulation Purpose	H
P-EDMS	PIPERUN
Description	

SHOW SELECTED OBJECT



PG-312018

3D

Unmatched Elements

- Pipeline (1) ▼
- Line ID (8) ▼
- System Path (10) ▼

Pipeline

← 1 →
← 81 →

Attributes **Files**

81 objects selected

Line ID	Description
20"-PG-312018-3309Y-IH (49);	Tagging ID: Pipe
18"-PG-312018-3309Y-IH (11);	Line ID: 16"-HS-1005-
14"-PG-312018-3309Y-IH (7);	Description: PIPE SEAM
3/4"-PG-312018-3309Y-IH (6);	
1 1/2"-PG-312018-3309Y-IH (2);	
1/2"-PG-312018-3309Y-IH (3);	
10"-PG-312018-3309Y-IH (2);	
2"-PG-312018-3309Y-IH (1);	

RBI Risk Analysis (PIPING)	*	▼
ECA Risk (PIPING)	*	▼
Insulation Material	FBG	
Insulation Purpose	H	
Pipeline	PG-312018	
Task	Piping	

HIGHLIGHT SELECTED OBJECT



UniversalPlantViewer (6.3.2203.2403) - https://p-edms4.petronas.com/UPV-PCASB-AB/PCASB-UPV/ (25/7/2022)

3D PCASB SASF INFST CSA-POINTCLOUD AREA SA Reformer Shelter NULL Object 00004e2e...

20"-PG-312018-3309Y-IH

3D

Unmatched Elements

Line ID (1)

System Path (1)

Line ID

Attributes Files

49 objects selected

4 links found

Show GA

Show InfoMap

Show ISO

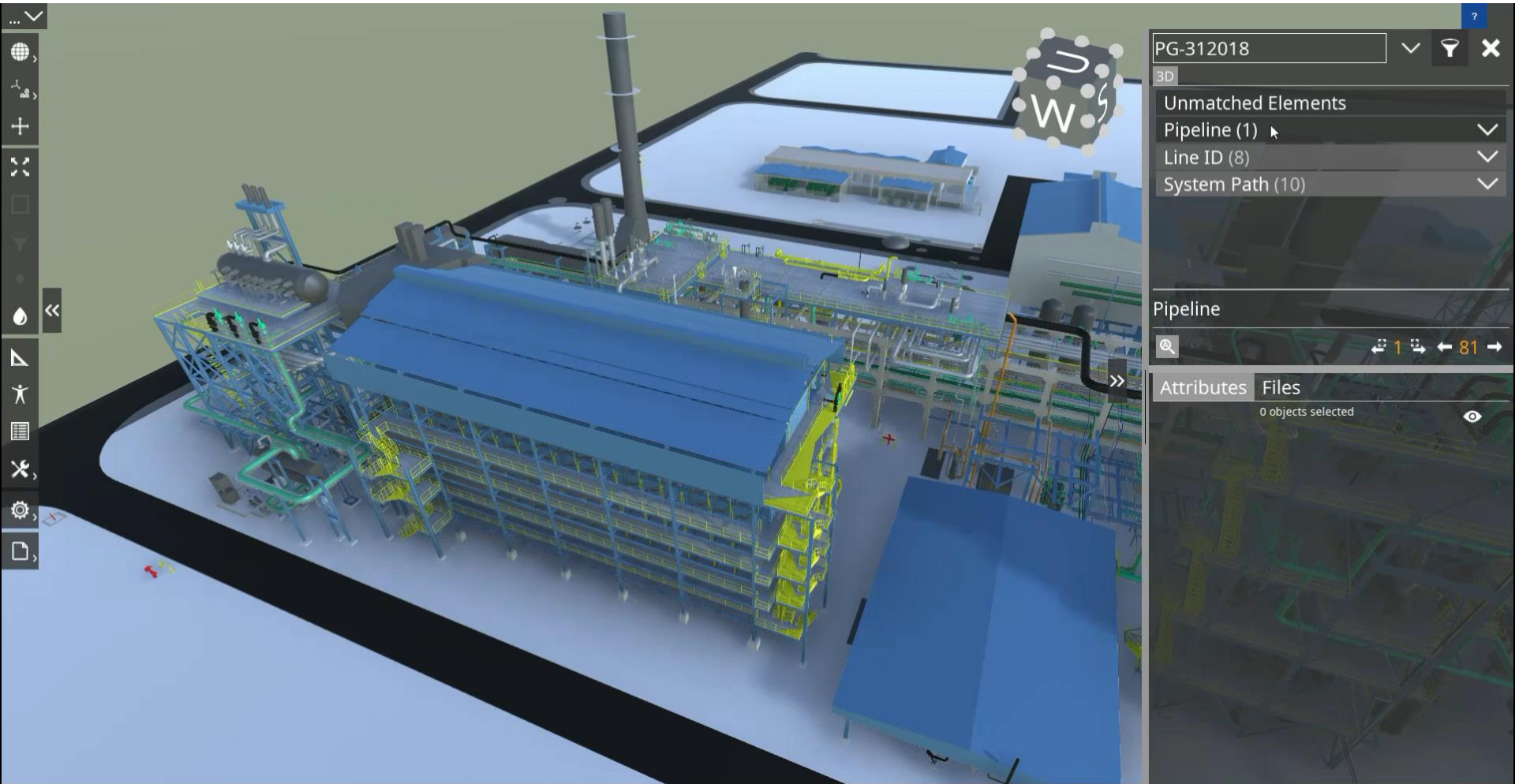
Show P&ID

Line ID	20"-PG-312018-3309Y-IH
RBI Risk Analysis (PIPING)	LOW <input type="checkbox"/>
ECA Risk (PIPING)	VERY HIGH <input type="checkbox"/>
Insulation Material	FBG
Insulation Purpose	H
P-EDMS	PIPERUN
Description	

Click on "Highlight selected object" 1

It will highlight the selected object and grey out the rest. 2

HIGHLIGHT SELECTED OBJECT



COLOUR OBJECT



1 Select the object

2 Select Colourise Mode

3 Advanced colour selection

4 Pick colour using eyedropper

5 Clear style

6 Reset all colour

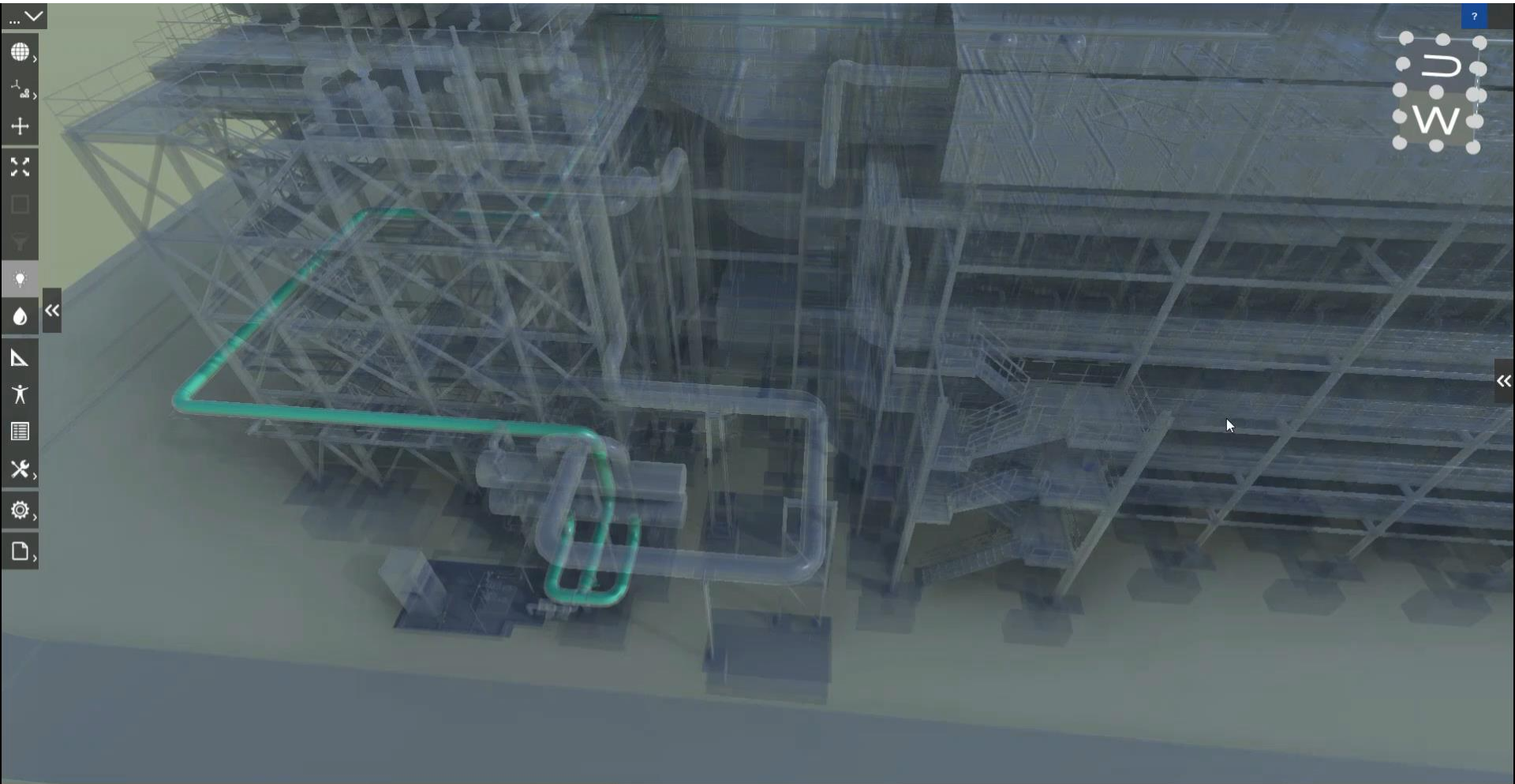
Attributes Files

1 object selected

- >> SP3d
- >> SP3d2
- >> SP3d3
- >> SP3d4
- >> SP3d5

AvH	read
Construction Type	New
Date Created	2/8/2021 2:20:43 PM
Date Last Modified	2/23/2021 4:53:53 PM
FileName	PCASB-REVIEW.vue
Linkage	2783 -29904 24608 1063
Location	E 5019 ft 9 in S 2624 ft 9 in EL+ 373 ft 6 in
Name	V3-2401
Permission Group	12
ID	
Reporting Type	Included in Material Control System
SP3d Moniker	@a=0027!!20014##299313593133828831
Status	Working
System Path	PCASB\UTIL\U24\PIPING\Equipment
Task	Equipment
Uid	00004e2e-0000-0000-df0a-308b20602704
UPVC FileName	PCASB-REVIEW.upvc
User Created	MYKULNT\administrator
User Last Modified	MYKULNT\administrator

COLOUR OBJECT



CENTER & FIT OBJECT



2
Center and fit
the selected
object

1
Select the
object

7-123* for P-123-ABC

Attributes	Files
1 object selected	
>> SP3d	
>> SP3d2	
>> SP3d3	
>> SP3d4	
>> SP3d5	
Name	V3-2401
AvH	read
Construction Type	New
Date Created	2/8/2021 2:20:43 PM
Date Last Modified	2/23/2021 4:53:53 PM
FileName	PCASB-REVIEW.vue
Linkage	2783 -29904 24608 1063
Location	E 5019 ft 9 in S 2624 ft 9 in EL+ 373 ft 6 in
Permission Group ID	12
Reporting Type	Included in Material Control System
SP3d Moniker	@a=0027!!20014##299313593133828831
Status	Working
System Path	PCASB\UTIL\U24\PIPING\Equipment
Task	Equipment
Uid	00004e2e-0000-0000-df0a-308b20602704
UPVC FileName	PCASB-REVIEW.upvc
User Created	MYKULNT\administrator
User Last Modified	MYKULNT\administrator

CLIPPING OBJECT



The screenshot shows a 3D CAD environment with a toolbar on the left and a properties panel on the right. The toolbar includes icons for 3D, PCASB, U13, PIPING, Equipment, NULL, and Object 00004e2e... Three callout boxes with red circles and numbers 1, 2, and 3 point to specific actions: 1. Select the object (pointing to a pump), 2. Select Clipping Mode (pointing to the clipping icon in the toolbar), and 3. Inverse Clipping (pointing to the inverse clipping icon in the toolbar). Other callouts include Intelli Clipping, Volume Clipping, and Select Clipping Mode. The properties panel on the right shows details for a selected object, including Name, Description, AvH, Construction Type, Date Created, Date Last Modified, FileName, Linkage, Location, Permission Group ID, Reporting Type, SP3d Moniker, Status, System Path, Task, Uid, UPVC FileName, User Created, and User Last Modified.

1 Select the object

2 Select Clipping Mode

3 Inverse Clipping

Intelli Clipping

Volume Clipping

Select Clipping Mode

Attributes Files

1 object selected

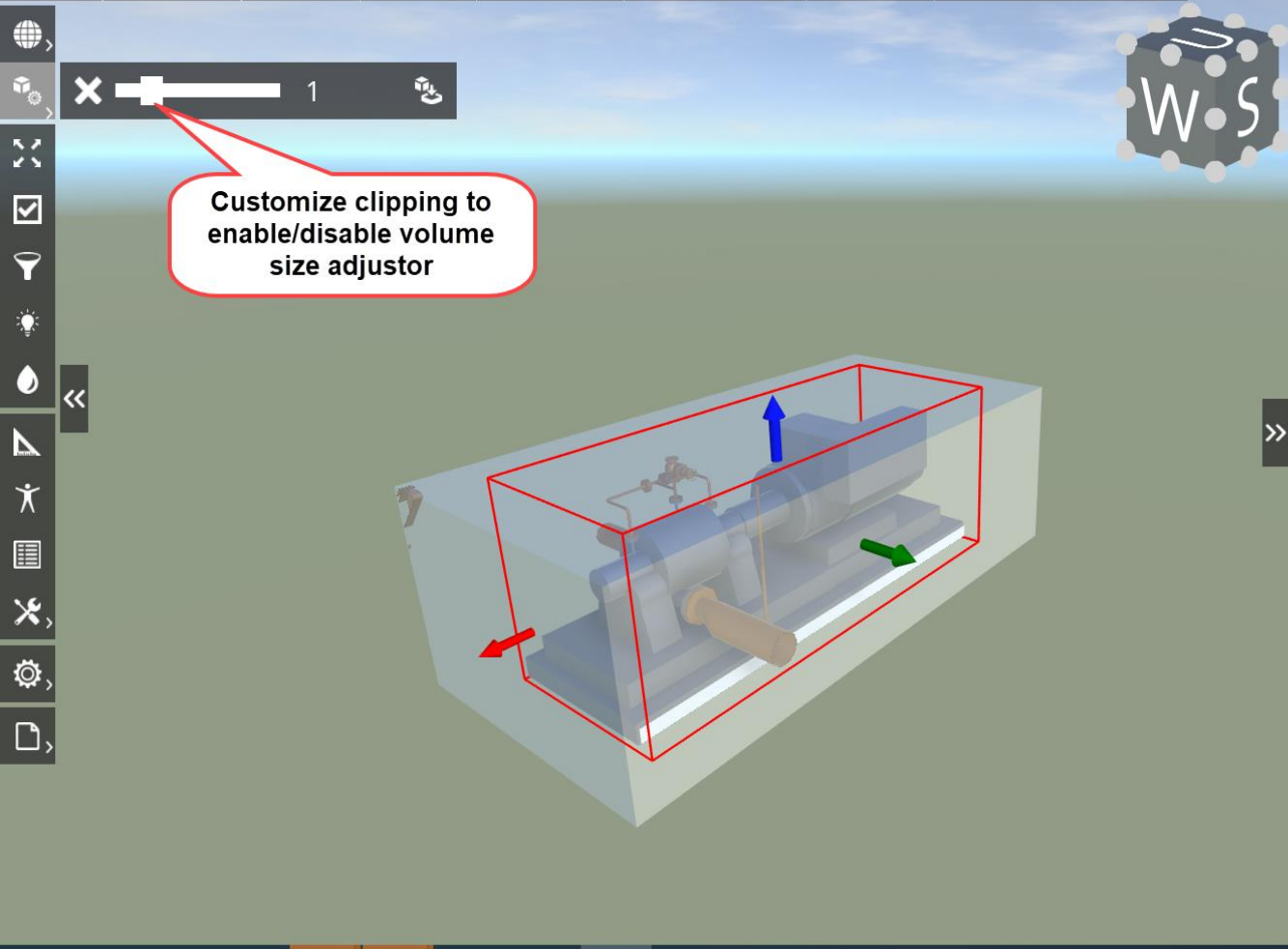
- >> SP3d
- >> SP3d2
- >> SP3d3
- >> SP3d4
- >> SP3d5

Name	P3-1301B
Description	LEAN SOLUTION PUMP
AvH	read
Construction Type	New
Date Created	2/10/2021 6:46:29 PM
Date Last Modified	3/17/2021 9:25:46 AM
FileName	PCASB-REVIEW.vue
Linkage	101 -20641 24611 1059
Location	E 5021 ft 6 in S 2590 ft 5 in EL+ 334 ft 10 in
Permission Group ID	12
Reporting Type	Included in Material Control System
SP3d Moniker	@a=0027!!20014##298187706718945381
Status	Working
System Path	PCASB\OXO\U13\PIPING\Equipment
Task	Equipment
Uid	00004e2e-0000-0000-6500-5faf23602304
UPVC FileName	PCASB-REVIEW.upvc
User Created	MYKULNT\administrator
User Last Modified	MYKULNT\administrator

CLIPPING OBJECT (Volume Clipping)



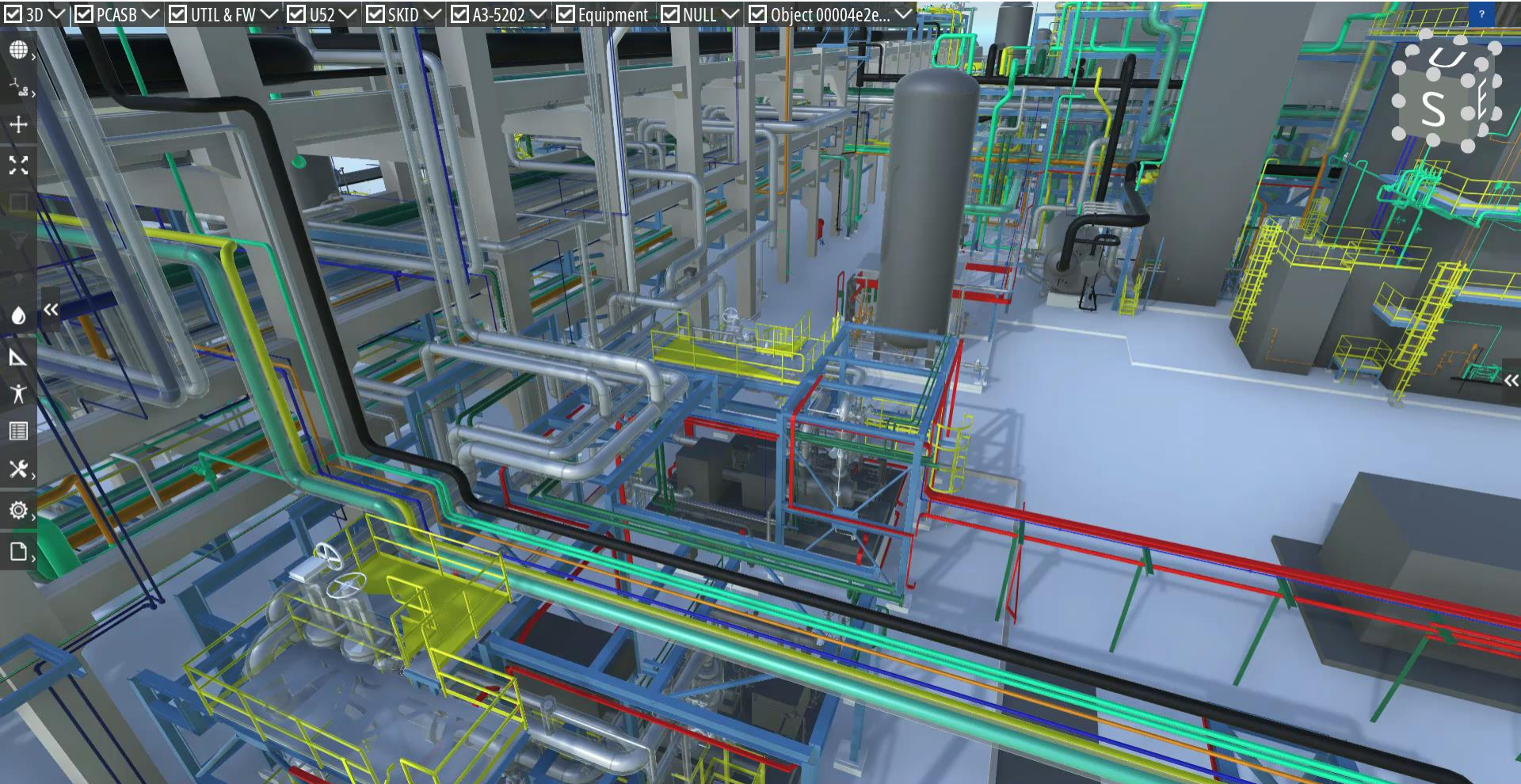
- 3D
- PCASB
- OXO
- U13
- PIPING
- Equipment
- NULL
- Object 00004e2e...



?-123* for P-123-ABC

Attributes	Files
(EQUIPMENT)	
Make	Laurence & Scott (LSE)
Rated Shaft Power (kW)	340
Rated Voltage (Volts)	3300
Rated Speed / Sync Speed (r/min)	2977/3000
Connection Star / Delta	X
Rated Current (Amps)	69
Full Load Torque (Nm)	1090
Bearing Type (DE/NDE)	Ball / Ball
Rated Power (KVA)	X
Manufacture	X
Primary V	X
Secondary Voltage	X
Primary Current	X
Secondary Current	X
Generator Output	X
Power	X
Rated Voltage	X
Rated Frequency	X
Speed	X
Description	LEAN SOLUTION PUMP
Location	E 5021 ft 6 in S 2590 ft 5 in EL+ 330 ft 4 in
P-EDMS Description	LEAN SOLUTION PUMP
System Path	PCASB\OXO\U13\PIPING\Equipment
Task	Equipment

CLIPPING OBJECT (Volume Clipping)

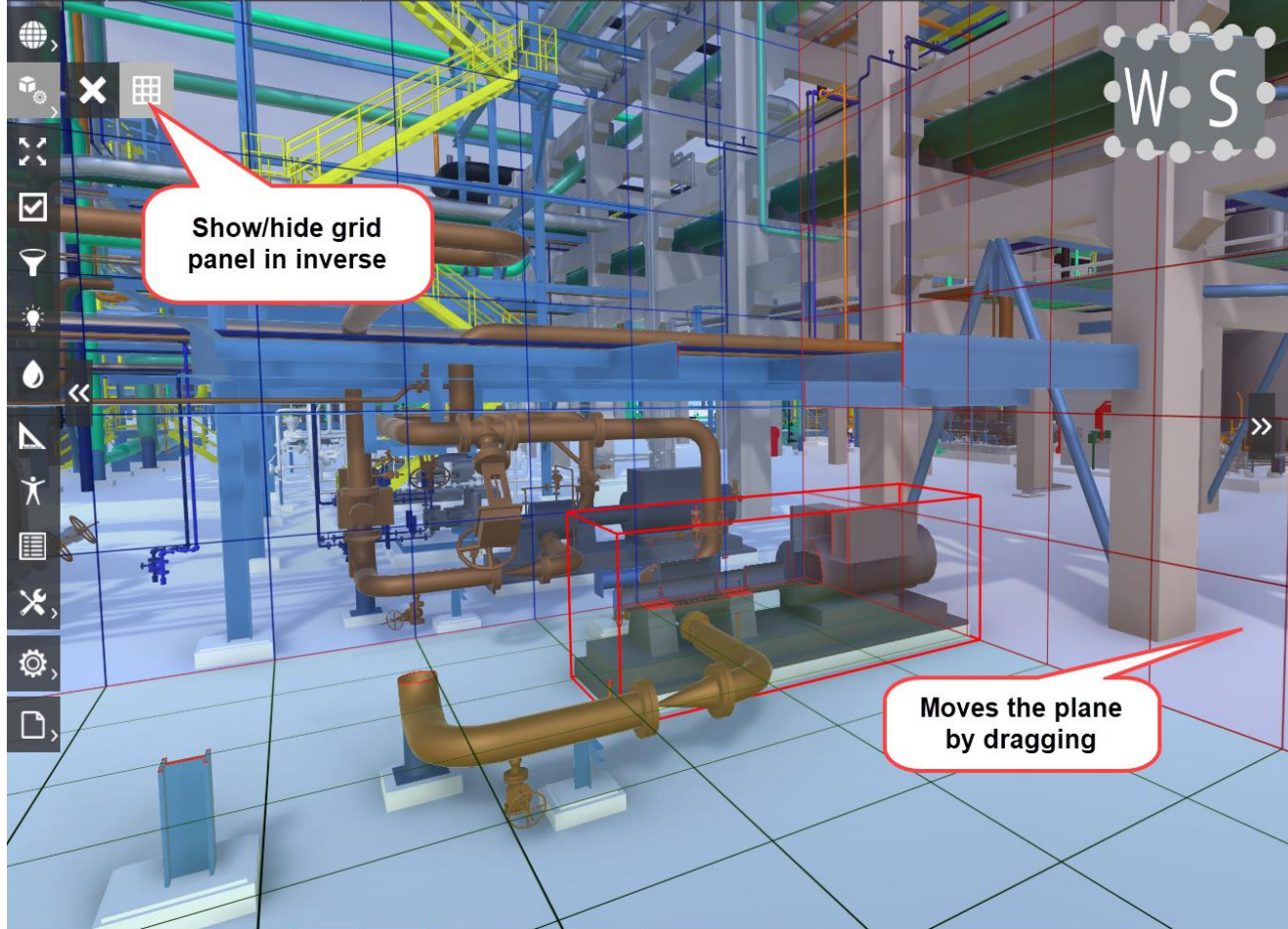


CLIPPING OBJECT (Inverse Clipping)



UniversalPlantViewer (6.3.2203.2403) - https://p-edms4.petrinas.com/UPV-PCASB-AB/PCASB-UPV/ (25/7/2022)

3D
 PCASB
 OXO
 U13
 PIPING
 Equipment
 NULL
 Object 00004e2e...



Show/hide grid panel in inverse

Moves the plane by dragging

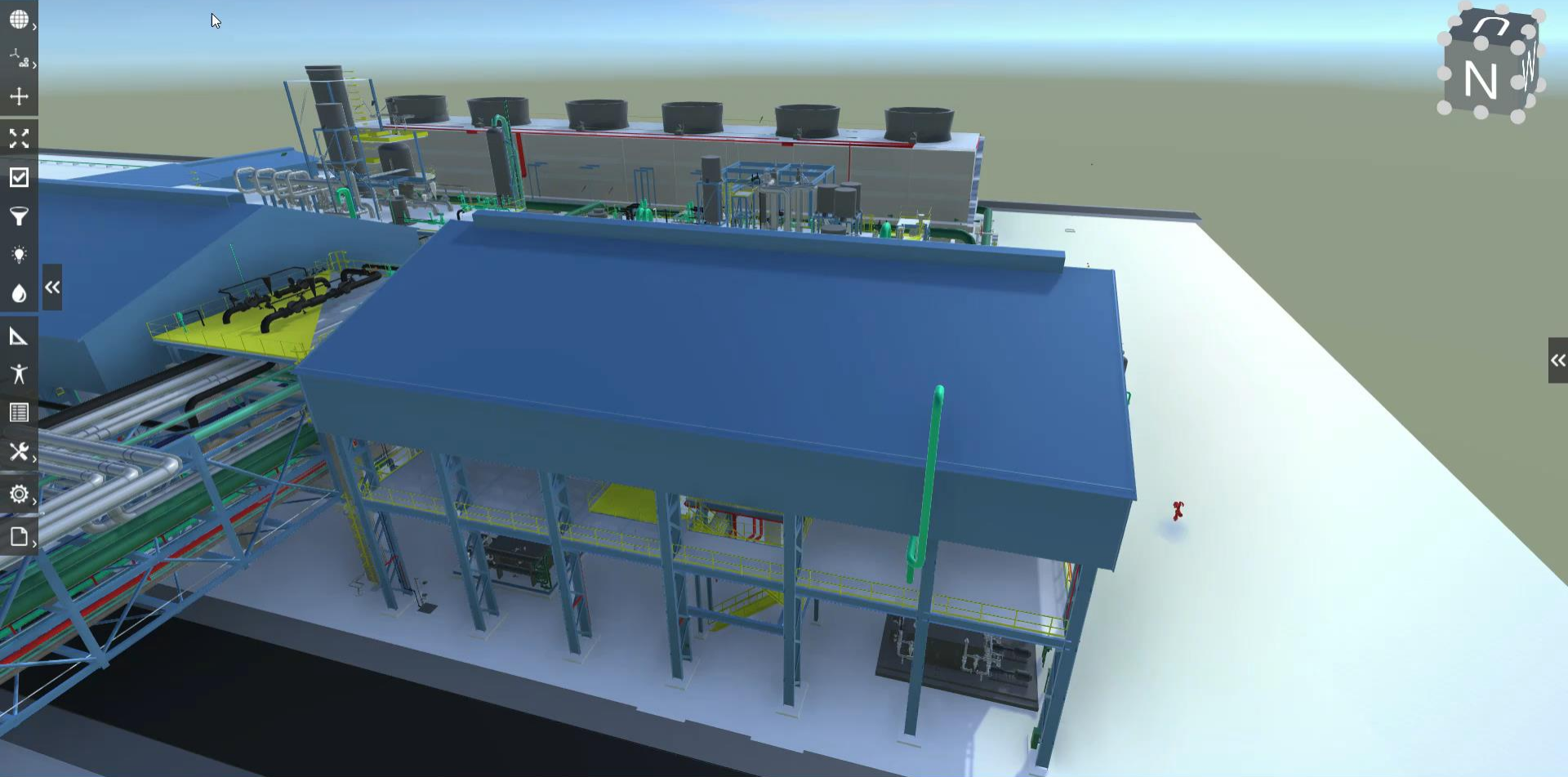
?-123* for P-123-ABC

Attributes	Files
(EQUIPMENT)	
Make	Laurence & Scott (LSE)
Rated Shaft Power (kW)	340
Rated Voltage (Volts)	3300
Rated Speed / Sync Speed (r/min)	2977/3000
Connection Star / Delta	X
Rated Current (Amps)	69
Full Load Torque (Nm)	1090
Bearing Type (DE/NDE)	Ball / Ball
Rated Power (KVA)	X
Manufacture	X
Primary V	X
Secondary Voltage	X
Primary Current	X
Secondary Current	X
Generator Output Power	X
Rated Voltage	X
Rated Frequency	X
Speed	X
Description	LEAN SOLUTION PUMP
Location	E 5021 ft 6 in S 2590 ft 5 in EL+ 330 ft 4 in
P-EDMS Description	LEAN SOLUTION PUMP
System Path	PCASB\OXO\U13\PIPING\Equipment
Task	Equipment

CLIPPING OBJECT (Inverse Clipping)



- 3D
- PCASB
- UTIL & FW
- U52
- SKID
- P3-5201A
- Equipment
- NULL
- Object 00004e2e...



MEASUREMENT: OBJECT DISTANCE



3D PCASB SASF INFST New Main Road Object 0003a998...

1 2

Create new distance measurement

Results show in X, Y, X and distance hypotenuse

3

Drag pointers to start and end point

2.877 m
0.914 m
2.728 m
0.002 m

MEASUREMENT: OBJECT COORDINATE



Results show value in East, North and elevation respected to plant origin

1562.568 m E
-722.945 m N
107.868 m U
1.800 m Ø

3

Drag pointer to coordinate point

1

2

Create new coordinate measurement

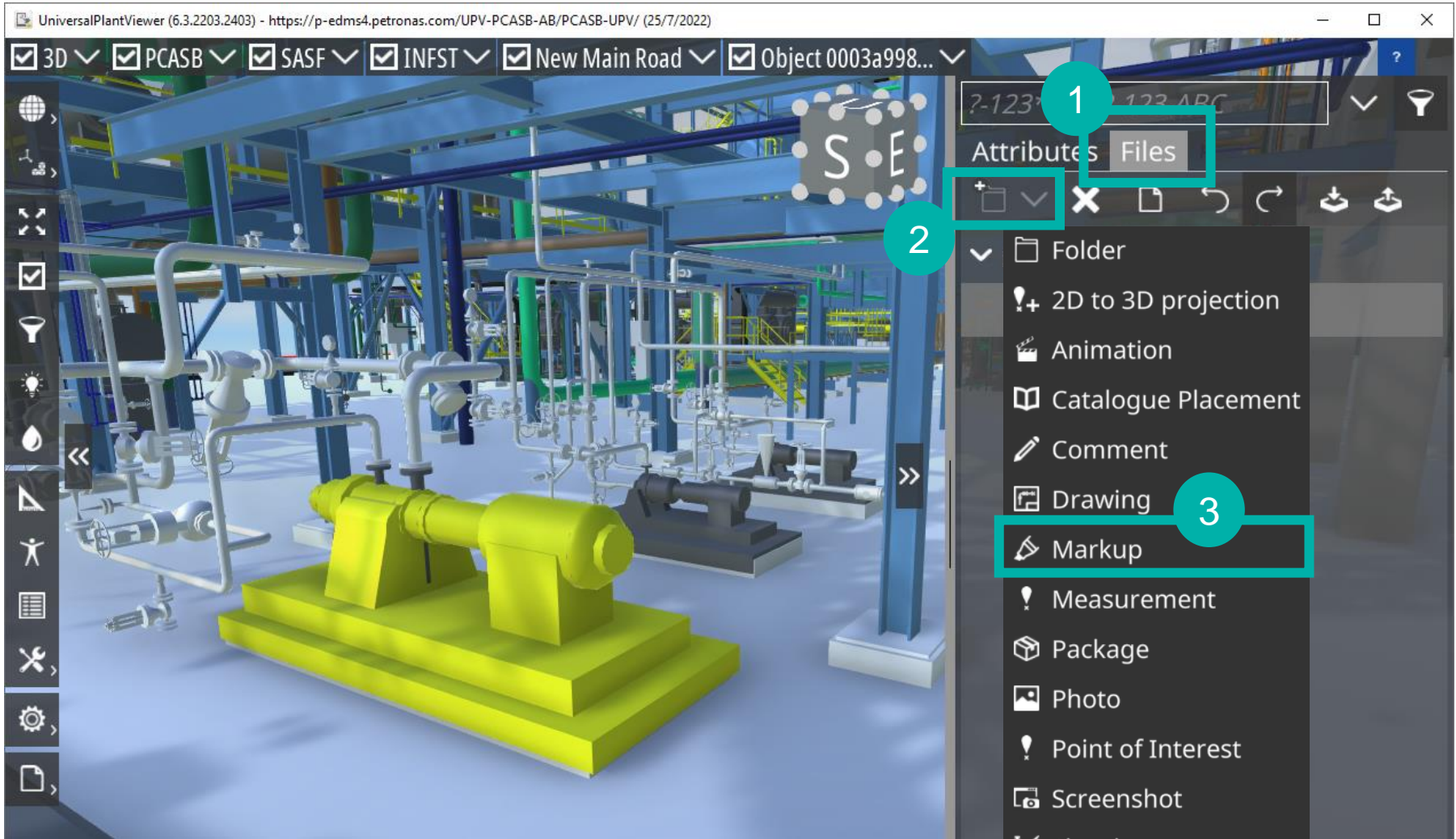
E U N ! O

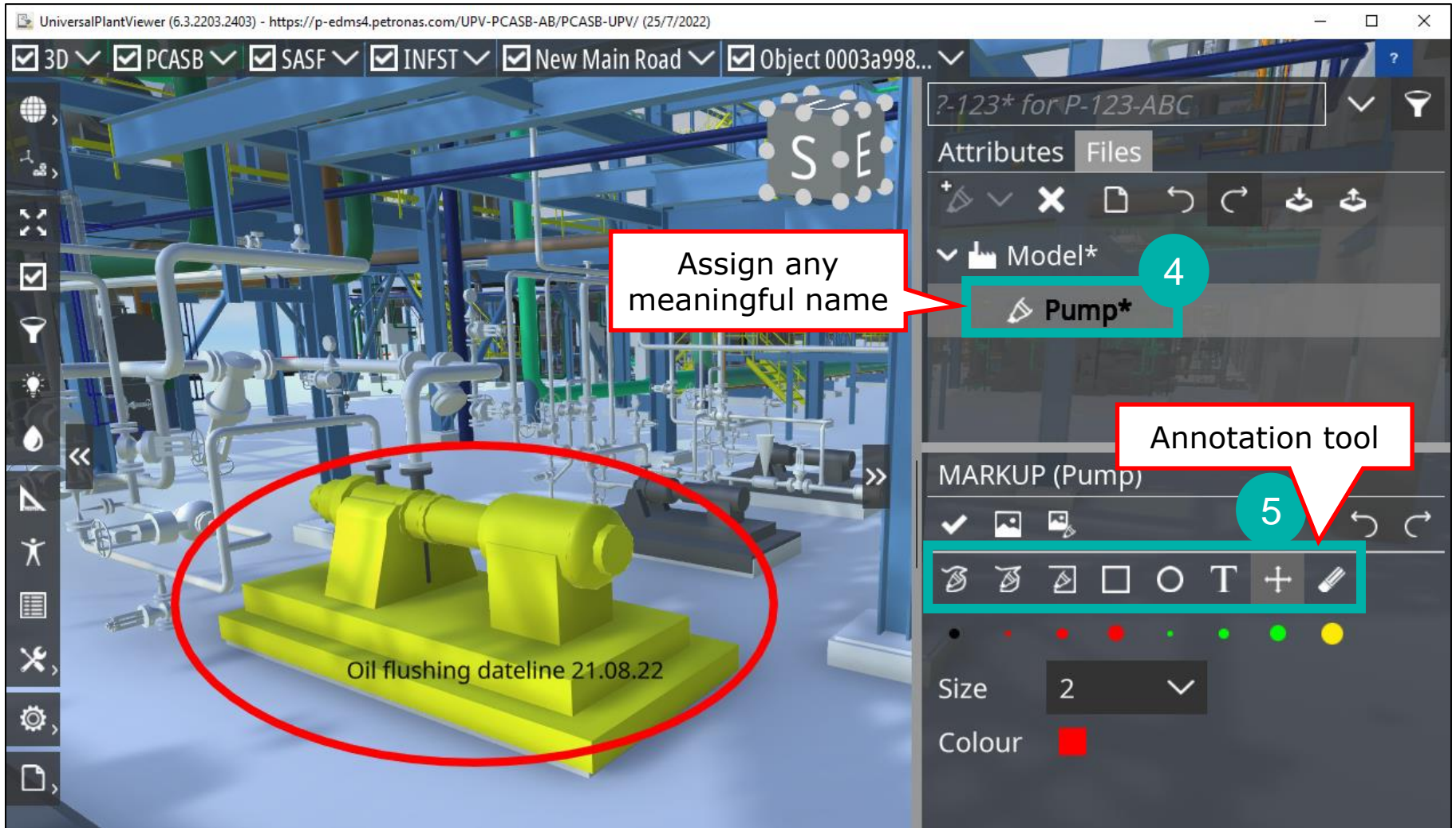
AVATAR NAVIGATION



The screenshot displays the UniversalPlantViewer application window. The title bar shows the version (6.3.2203.2403) and the URL (https://p-edms4.petronas.com/UPV-PCASB-AB/PCASB-UPV/ (25/7/2022)). The top toolbar includes several checked options: 3D, PCASB, SASF, INFST, New Main Road, and Object 00004e2e-... A vertical toolbar on the left contains various navigation and tool icons, with a red callout box labeled '1' highlighting the avatar icon. The main 3D view shows a complex industrial facility with blue steel structures, green and red piping, and a white truck in the foreground. A semi-transparent 'E' icon is overlaid on the scene. On the right, a panel titled '?-123* for P-123-ABC' has tabs for 'Attributes' and 'Files', showing '0 objects selected'. Below this is an 'AVATARS' section with a grid of icons representing different avatars and vehicles. A red callout box labeled '2' points to a white truck icon in this grid, with the text 'Select your choice of avatar/object and drag to plant'. The bottom of the window features a navigation pad with a crosshair and a refresh icon.

Select your choice of avatar/object and drag to plant





UniversalPlantViewer (6.3.2203.2403) - <https://p-edms4.petronas.com/UPV-PCASB-AB/PCASB-UPV/> (25/7/2022)

3D PCASB SASF INFST New Main Road Object 0003a998...

Assign any meaningful name

Annotation tool

Oil flushing dateline 21.08.22

Attributes Files

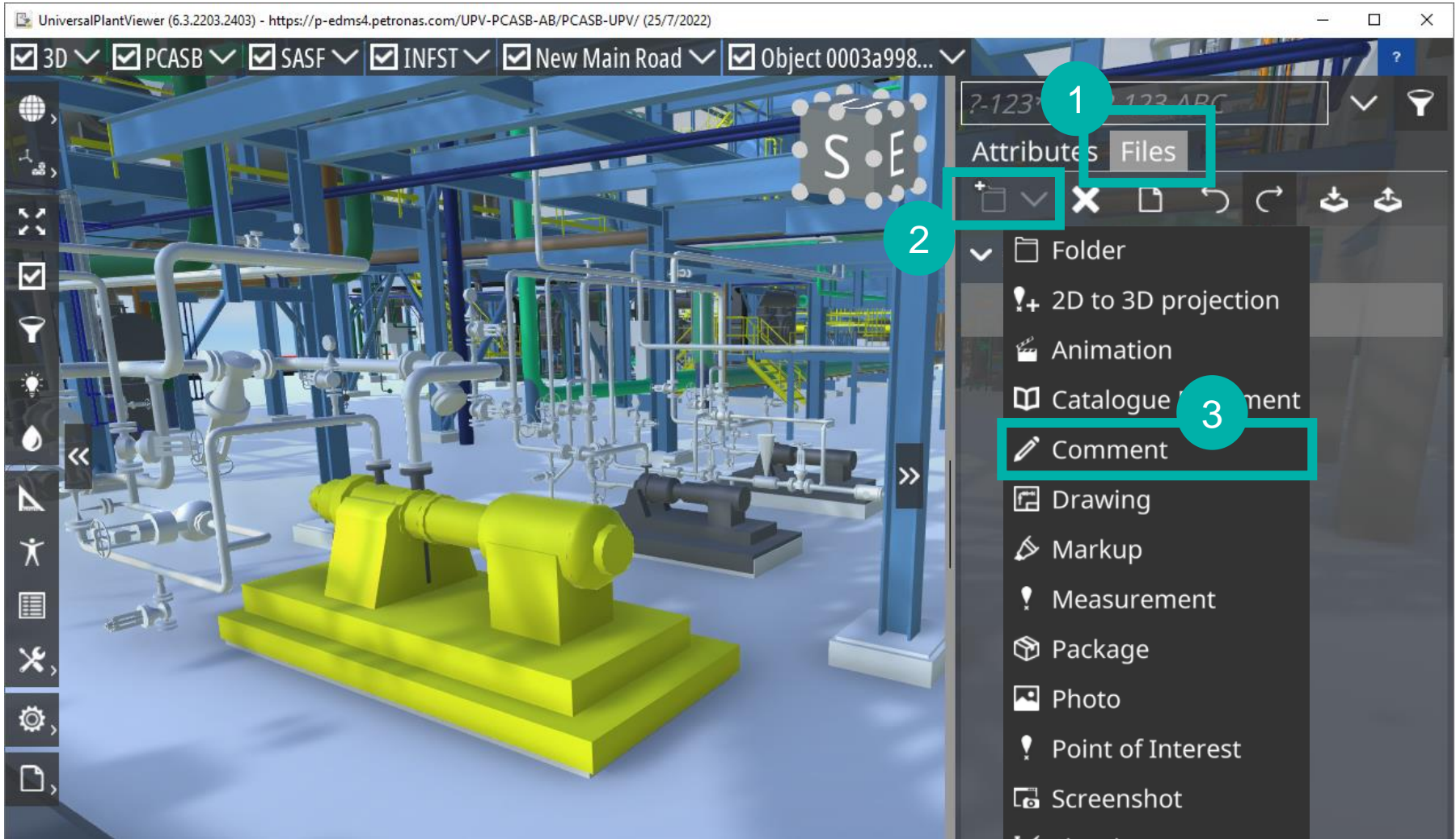
Model* Pump*

MARKUP (Pump)

Size 2

Colour

COMMENTING

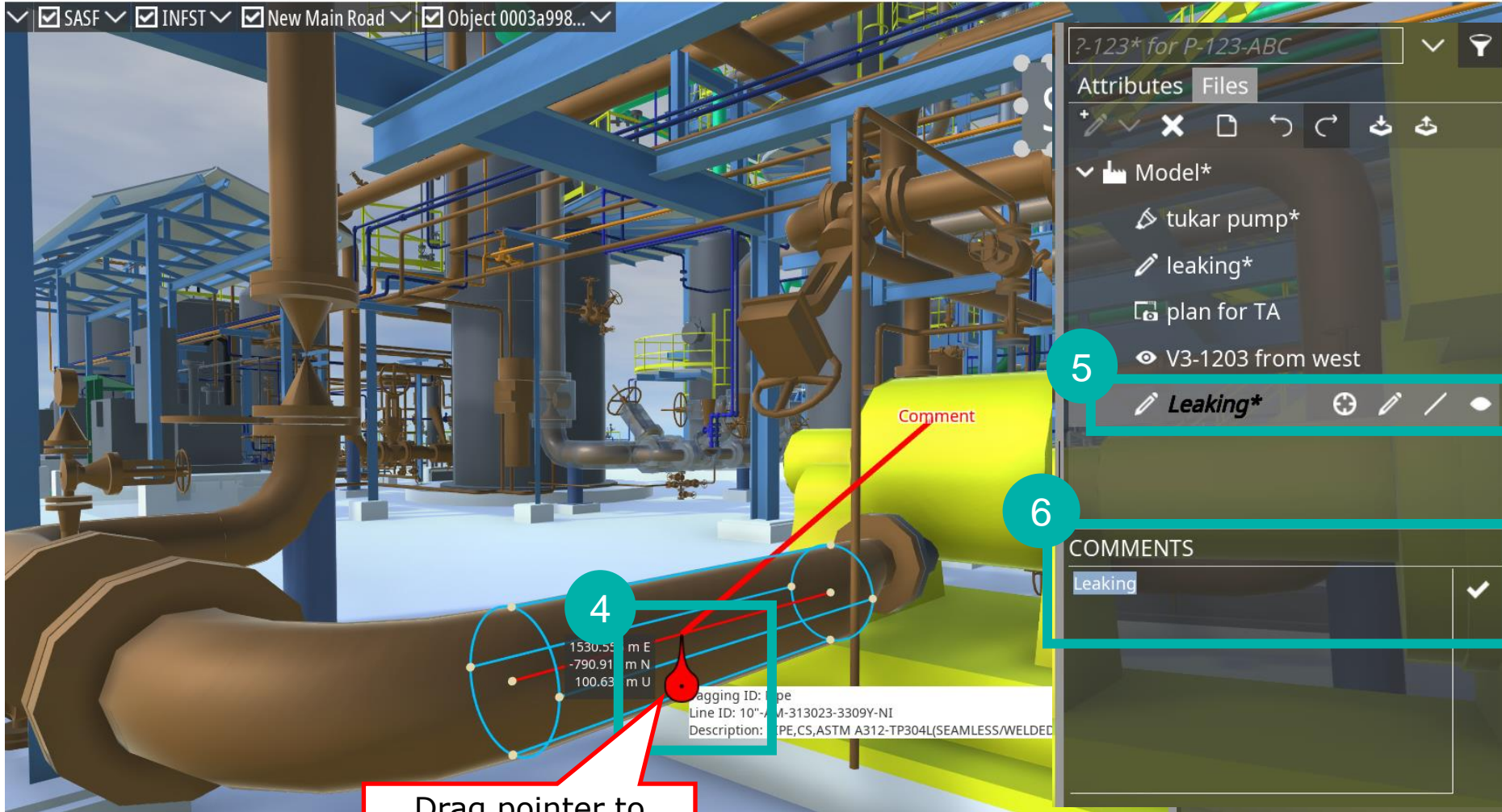


COMMENTING



6.3.2203.2403) - <https://p-edms4.petronas.com/UPV-PCASB-AB/PCASB-UPV/> (25/7/2022)

▼ SASF ▼ INFST ▼ New Main Road ▼ Object 0003a998... ▼



Drag pointer to exact location of comment

5

6

?-123* for P-123-ABC

Attributes Files

+ ✖ 📄 ↶ ↷ 📶 📶

▼ Model*

- tukar pump*
- leaking*
- plan for TA
- V3-1203 from west

*Leaking** 🛠️ ✎️ ✏️ 🙁

COMMENTS

Leaking ✓

CREATE SNAPSHOT



UniversalPlantViewer (6.3.2203.2403) - <https://p-edms4.petronas.com/UPV-PCASB-AB/PCASB-UPV/> (25/7/2022)

3D PCASB SASF INFST New Main Road Object 0003a998...

1. Attributes Files
 2. Folder
 3. Screenshot

leaking

tukar pump

W S

?-1237 123-ABC
 Folder
 2D to 3D projection
 Animation
 Catalogue Placement
 Comment
 Drawing
 Markup
 Measurement
 Package
 Photo
 Point of Int
 Screenshot
 Sketch
 Spraying
 View

CREATE SNAPSHOT



UniversalPlantViewer (6.3.2203.2403) - https://p-edms4.petronas.com/UPV-PCASB-AB/PCASB-UPV/ (25/7/2022)

3D
 PCASB
 SASF
 INFST
 New Main Road
 Object 0003a998...

?-123* for P-123-ABC

Attributes Files

Model*

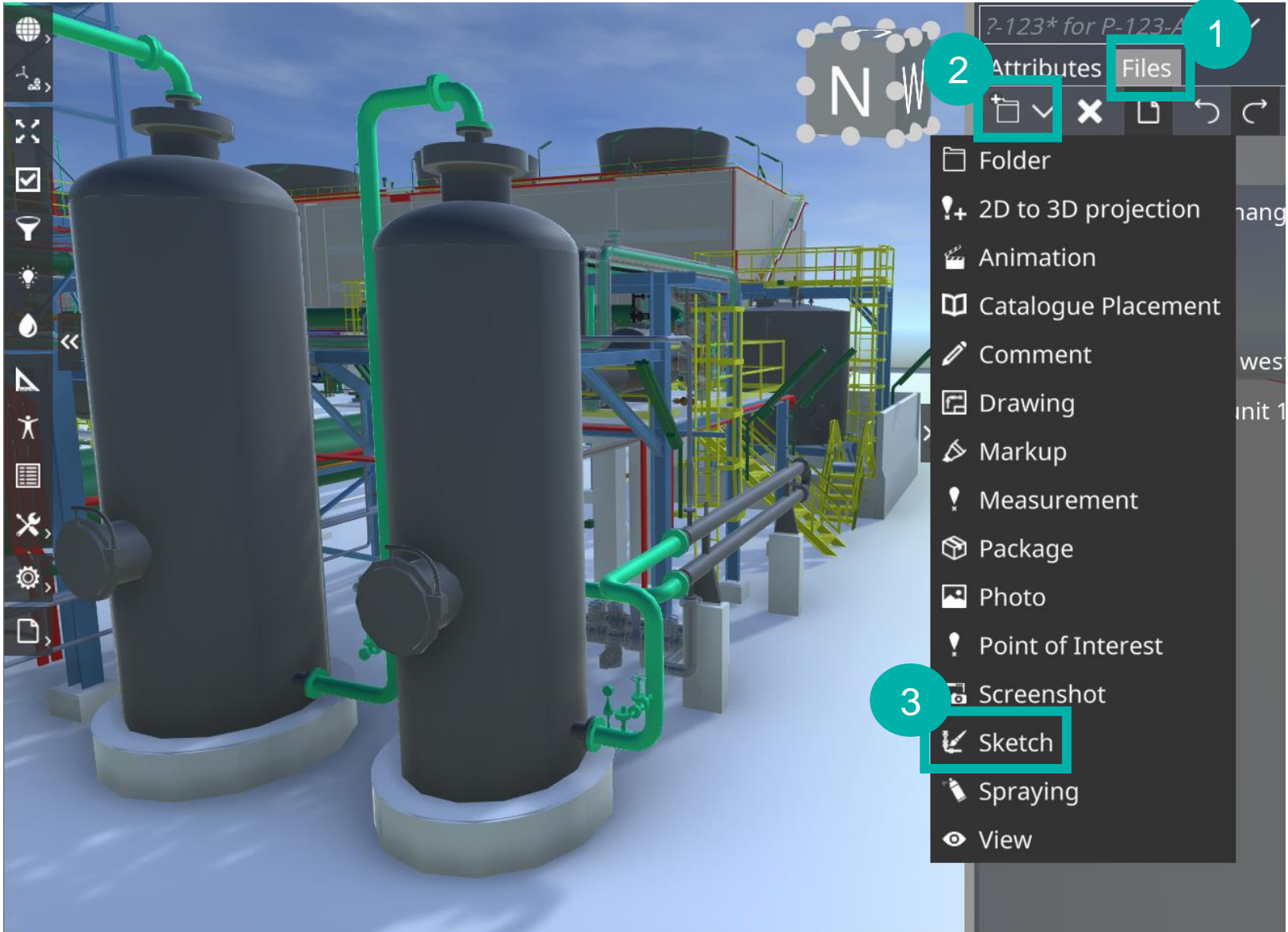
- pump to be changed*
- leaking*
- plan for TA
- V3-1203 from west
- Plan of TA in unit 1A

3

Assign any meaningful name

Download snapshot

SKETCH CONCEPTUAL DESIGN



SKEETCH CONCEPTUAL DESIGN



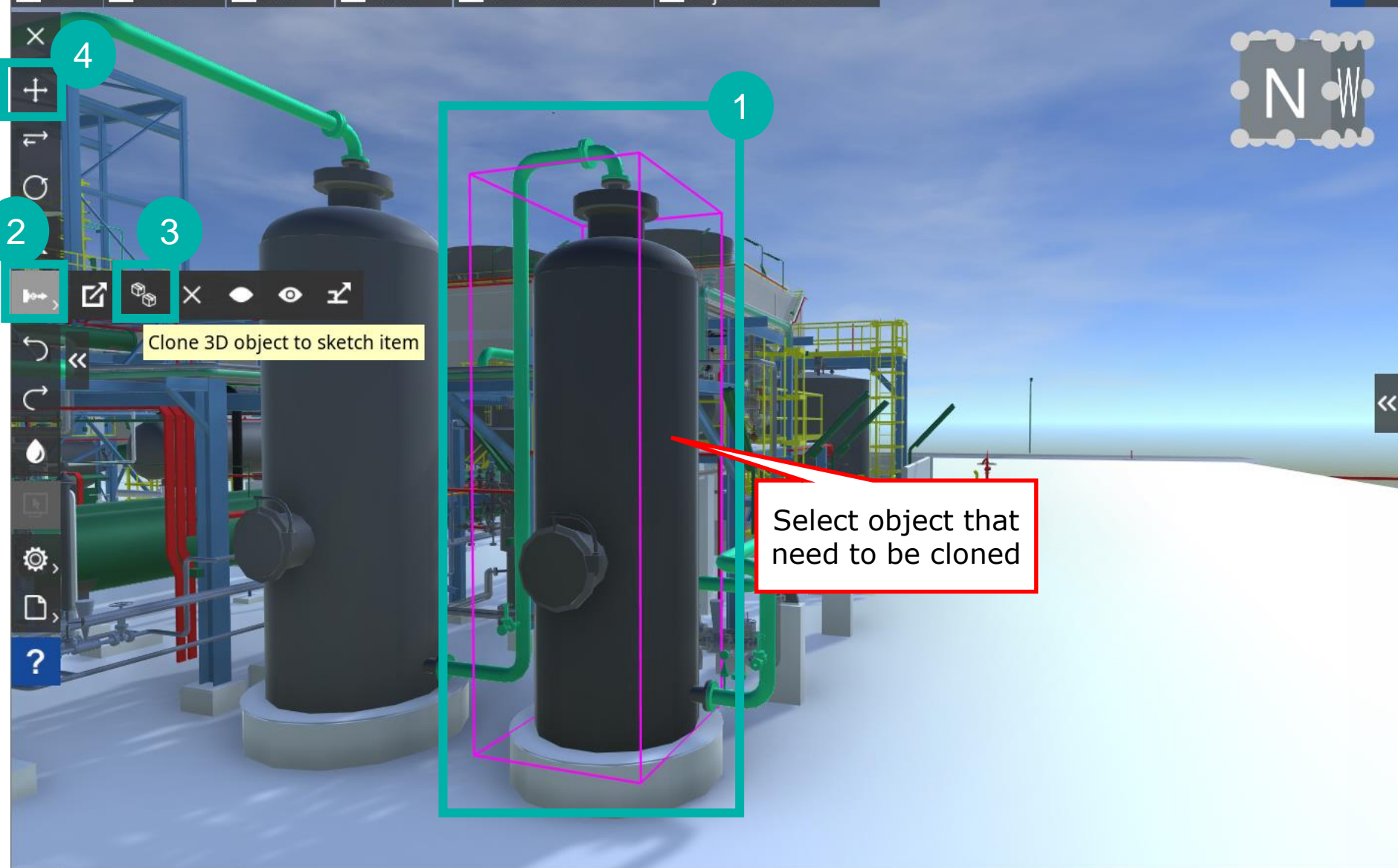
3D For area 1A X

Attributes Files

- Model*
- pump to be changed*
- leaking*
- plan for TA
- V3-1203 from west
- Plan of TA in unit 1A*
- For area 1A

Assign any meaningful name

SKECTH CONCEPTUAL DESIGN (CLONING)



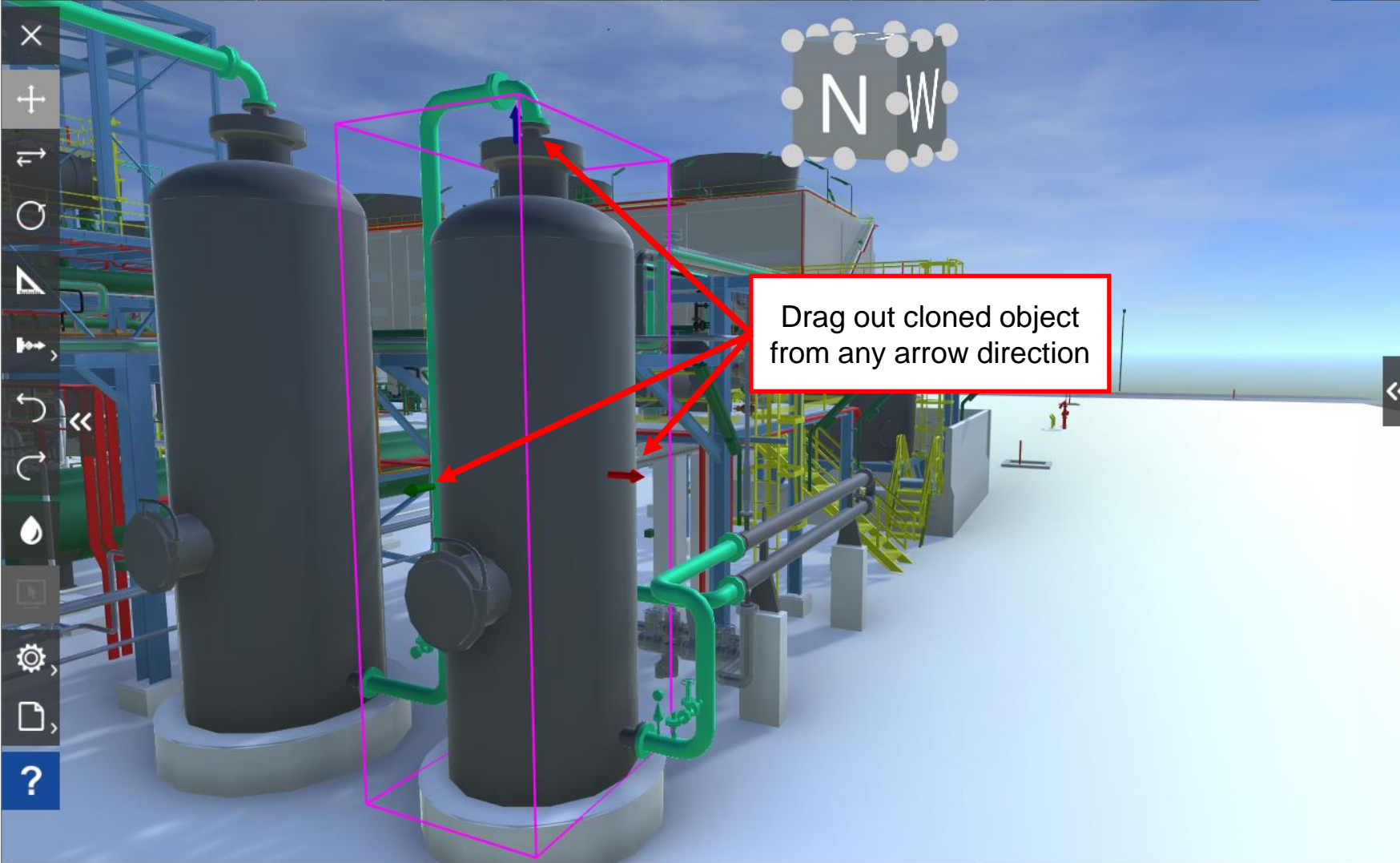
Clone 3D object to sketch item

Select object that need to be cloned

SKETCH CONCEPTUAL DESIGN (CLONING)



3D PCASB NH3 U15 PIPING Equipment NULL Object 00004e2e... ?



Drag out cloned object from any arrow direction

3D For area 1A ×

SKETCH CONCEPTUAL DESIGN (CLONING)



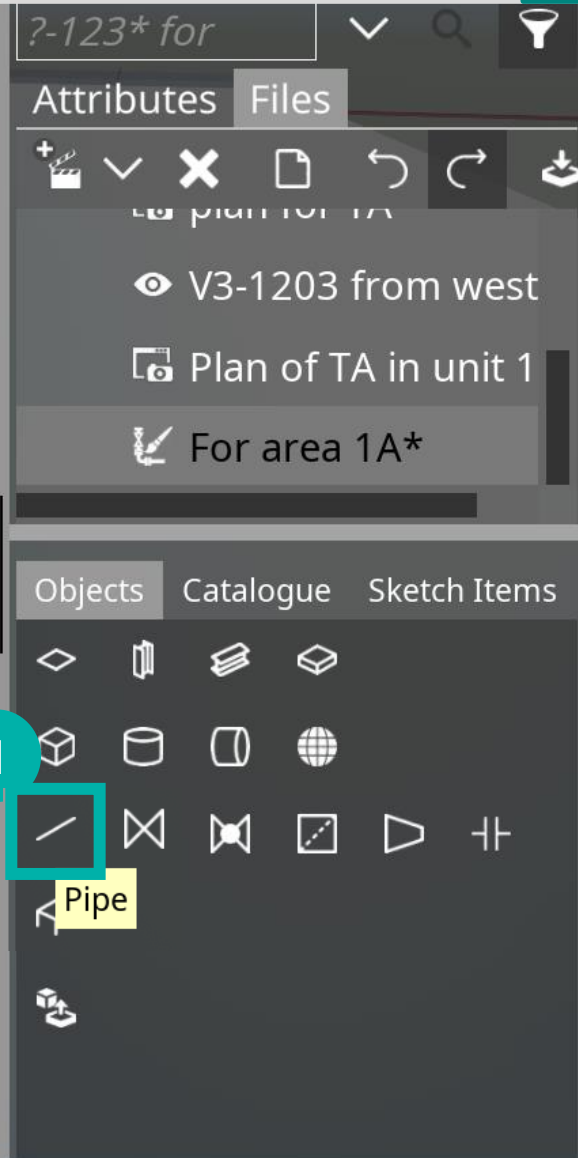
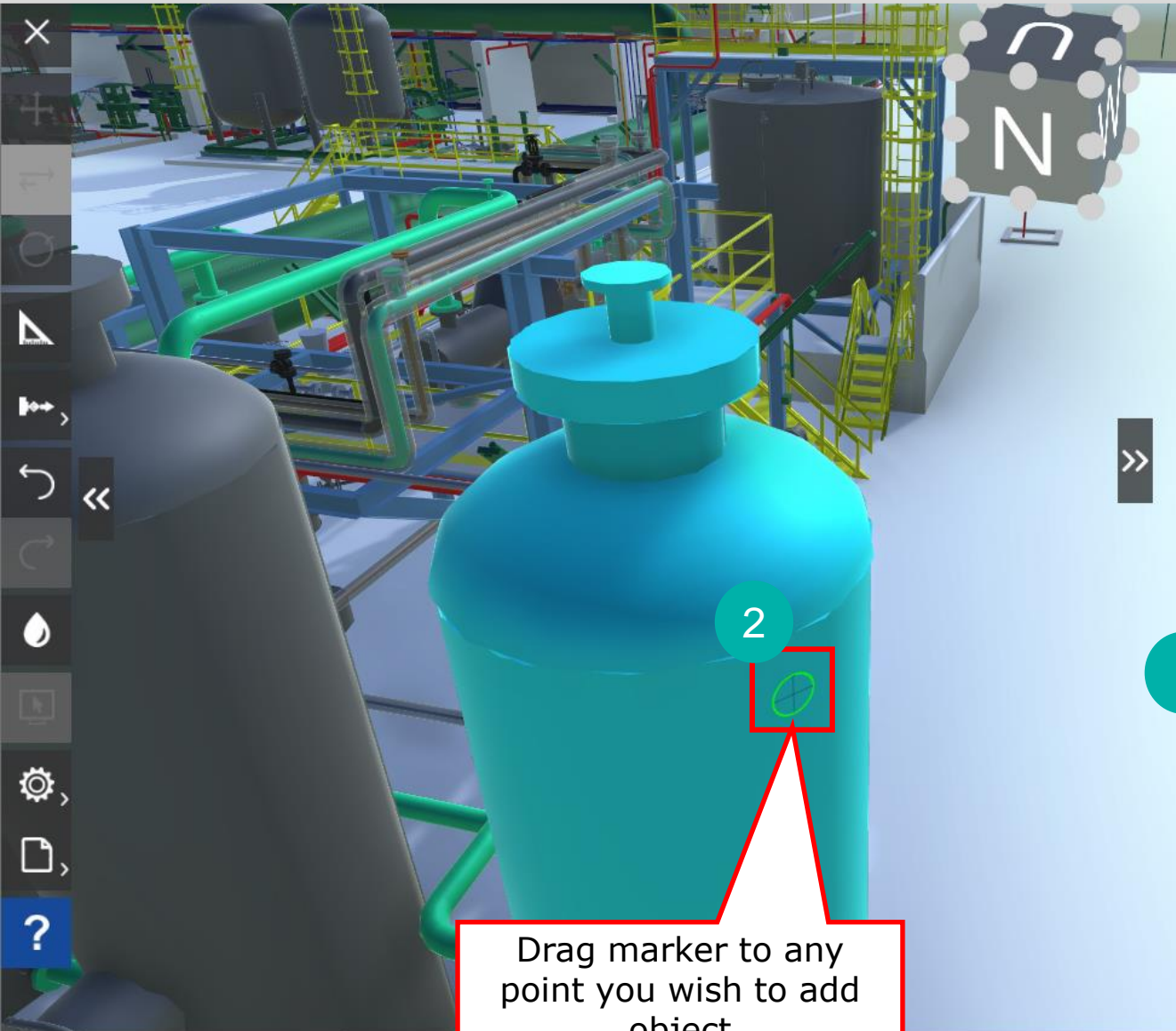
3D PCASB NH3 U15 PIPING Equipment NULL Object 00004e2e... ?



Cloned object

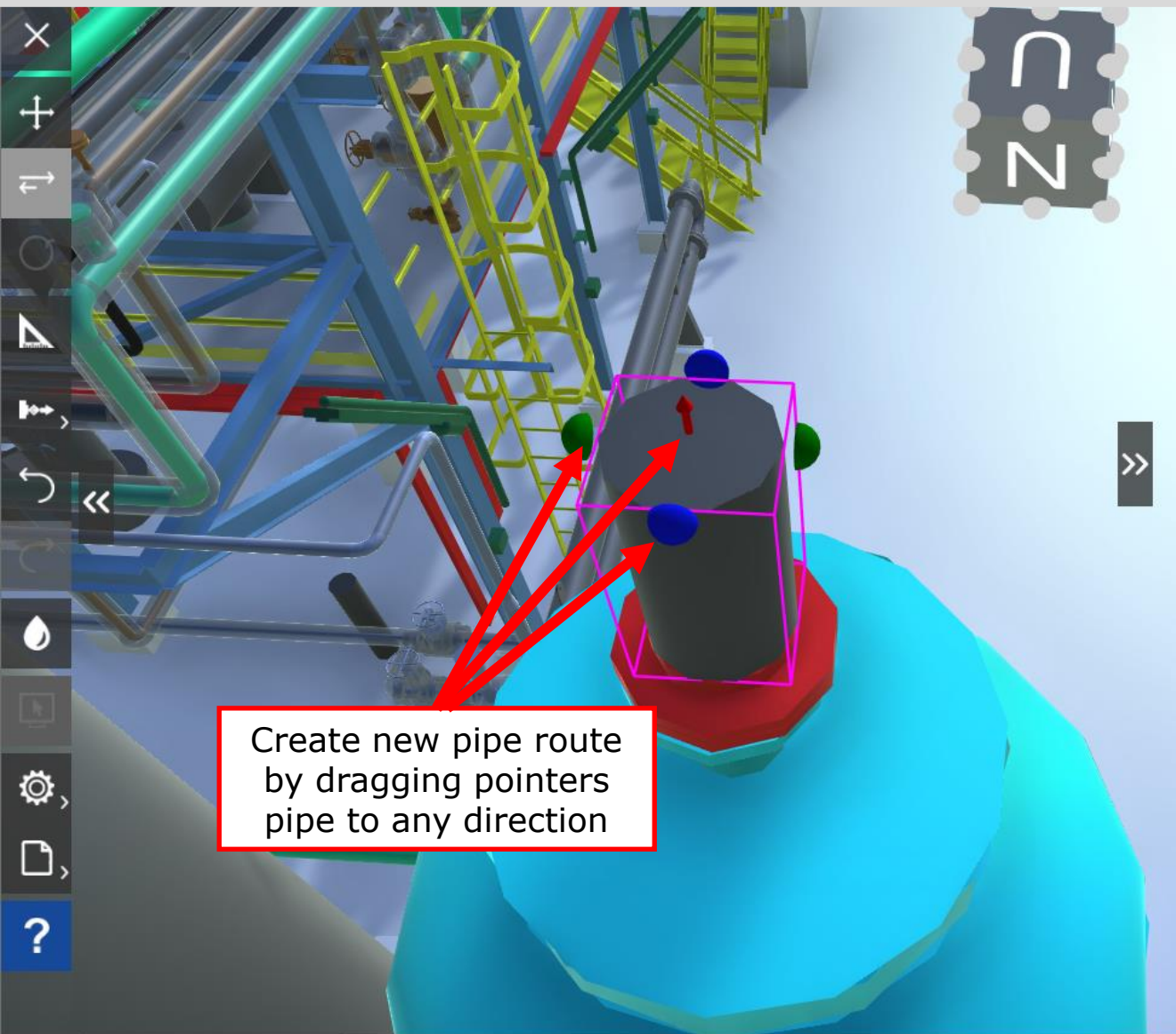
3D For area 1A

SKECTH CONCEPTUAL DESIGN (NEW PIPE ROUTING)



Drag marker to any point you wish to add object

SKECTH CONCEPTUAL DESIGN (NEW PIPE ROUTING)



Create new pipe route by dragging pointers pipe to any direction

?-123* for

Attributes Files

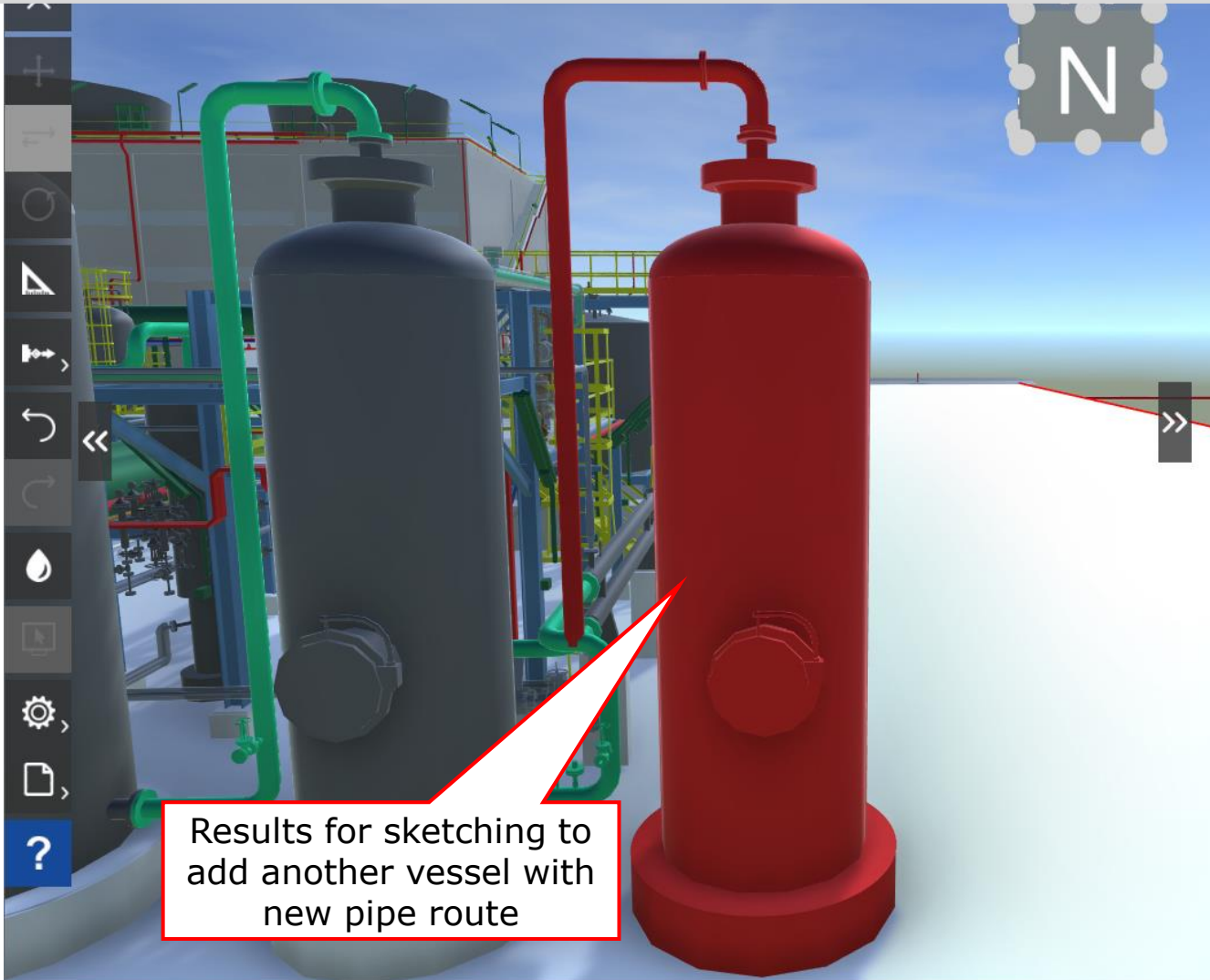
V3-1203 from west

Plan of TA in unit 1

For area 1A*

Objects Catalogue Sketch Items

SKETCH CONCEPTUAL DESIGN



Results for sketching to add another vessel with new pipe route

Attributes		Files
1 object selected		
Name	Ground 4	
System Path	PCASB\SASF\INFST\New Main Road	
Task	Structure	

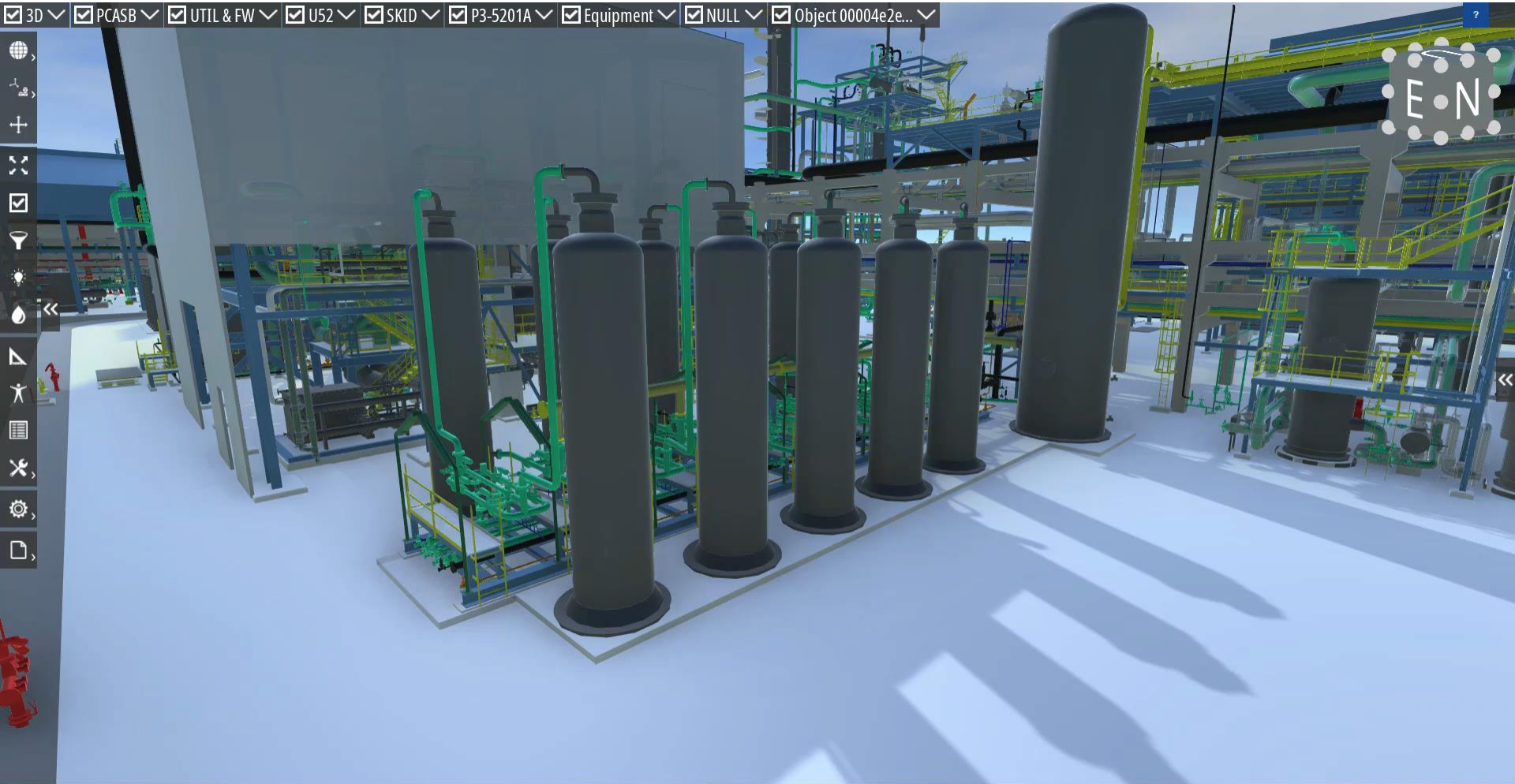
Objects Catalogue Sketch Items

++ More objects can be used for sketching

3D For area 1A X



SKETCH CONCEPTUAL DESIGN (CLONING)



ADDING OBJECT FROM CATALOGUE



A screenshot of a 3D software interface. The main view shows a 3D model of a scaffolding structure in a green color, outlined with a magenta wireframe. A red callout box with a white background and black text says "Click at object and drag to model". To the right, a panel shows a list of objects under the "Catalogue" tab. A red callout box with a white background and black text says "Click at 'Catalogue' to add scaffolding". The panel also shows a list of attributes and files for the selected object, including "Model*", "pump to be changed", "leaking", "plan for TA", "V3-1203 from west", "Plan of TA in unit 1A", and "For area 1A*". The bottom left of the interface shows "3D For area 1A X".

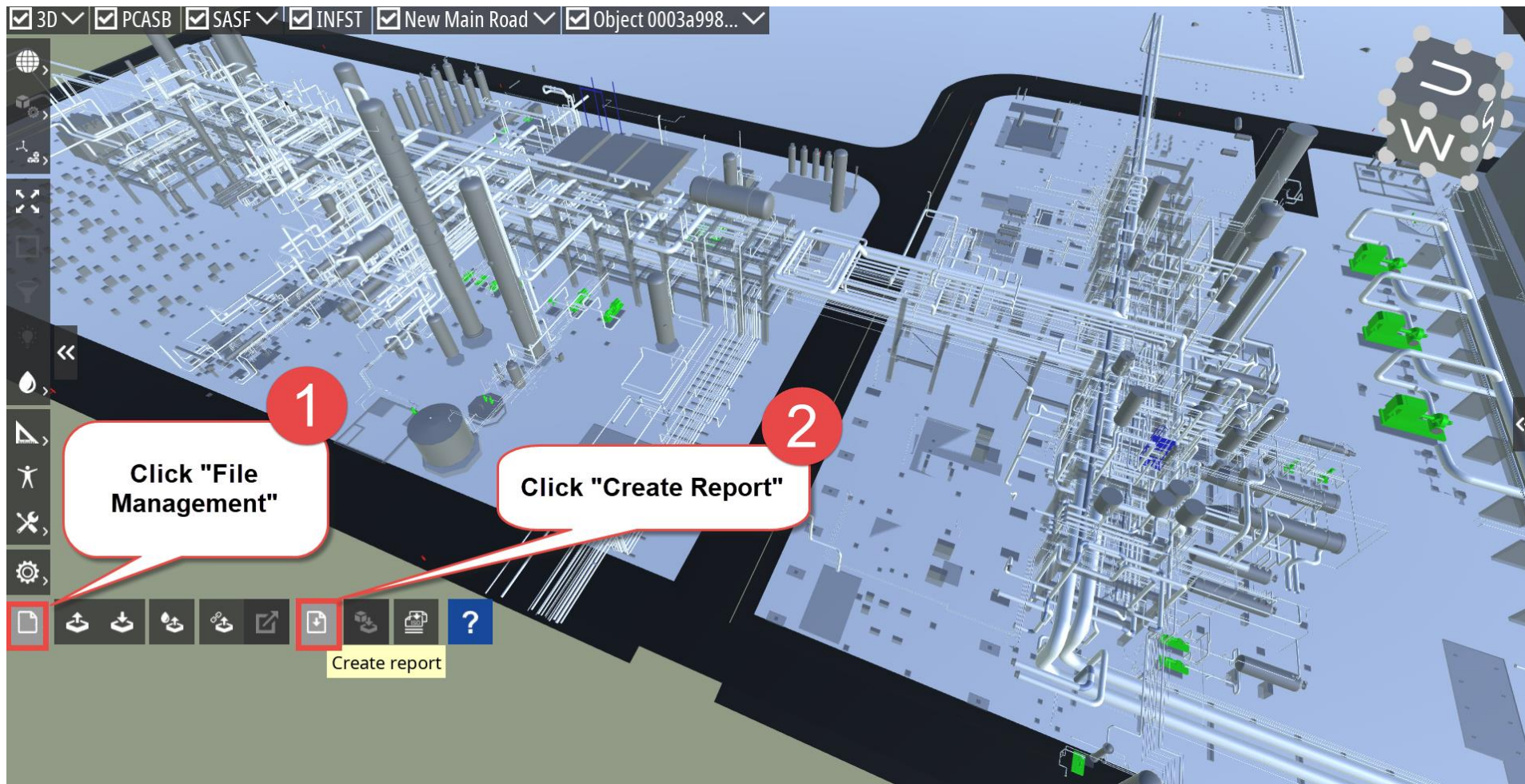
ADDING OBJECT FROM CATALOGUE



3D PCASB SASF INFST New Main Road Object 0003a998...



REPORT





Report definition selection

Available report definitions

3

Click "New"

New

Cancel

Report attributes

New report 1

Include sketch data

Choose export elements

4

Choose export elements

All

Selected

Visible

Available attributes

Symbol Attributes/parFullWidth

Symbol Attributes/parHeight

Symbol Attributes/parWidth

Thickness

Type

Uid

UPVC FileName

User Created

User Last Modified

5

Choose by drag the "Available attributes" drop to "Selected attributes"

Selected attributes

Name

Task

System Path

Click "OK"

6

Reset

OK

Cancel



REPORT



New report 3 (14451 rows)

Name	Task	System Path
A3-5302	Equipment	PCASB\UTIL\U53\PIPING\Equipment
V3-1514	Equipment	PCASB\NH3\U15\PIPING\Equipment
P3-1304P	Equipment	PCASB\OXO\U13\PIPING\Equipment
V3-5201	Equipment	PCASB\UTIL\U52\PIPING\Equipment
S3-1303	Equipment	PCASB\OXO\U13\PIPING\Equipment
C3-5201	Equipment	PCASB\UTIL\U52\PIPING\Equipment
V3-2023	Equipment	PCASB\OXO\U14-SG COMP\PIPING\Equipment
S3-1201	Equipment	PCASB\OXO\U12\PIPING\Equipment
V3-1612C	Equipment	PCASB\NH3\U16\PIPING\Equipment
S3-1204	Equipment	PCASB\OXO\U12\PIPING\Equipment
E3-1309A	Equipment	PCASB\OXO\U13\PIPING\Equipment
V3-2021	Equipment	PCASB\OXO\U14-SG COMP\PIPING\Equipment
V3-1417	Equipment	PCASB\OXO\U14-SG COMP\PIPING\Equipment
E3-1301	Equipment	PCASB\OXO\U13\PIPING\Equipment
E3-5202A	Equipment	PCASB\UTIL\U52\PIPING\Equipment
E3-121	Equipment	PCASB\OXO\U12\PIPING\Equipment
E3-1911	Equipment	PCASB\NH3\U19\Piping\Equipment

3D New report 3 X

View in 3D Model

Isolate the selected object

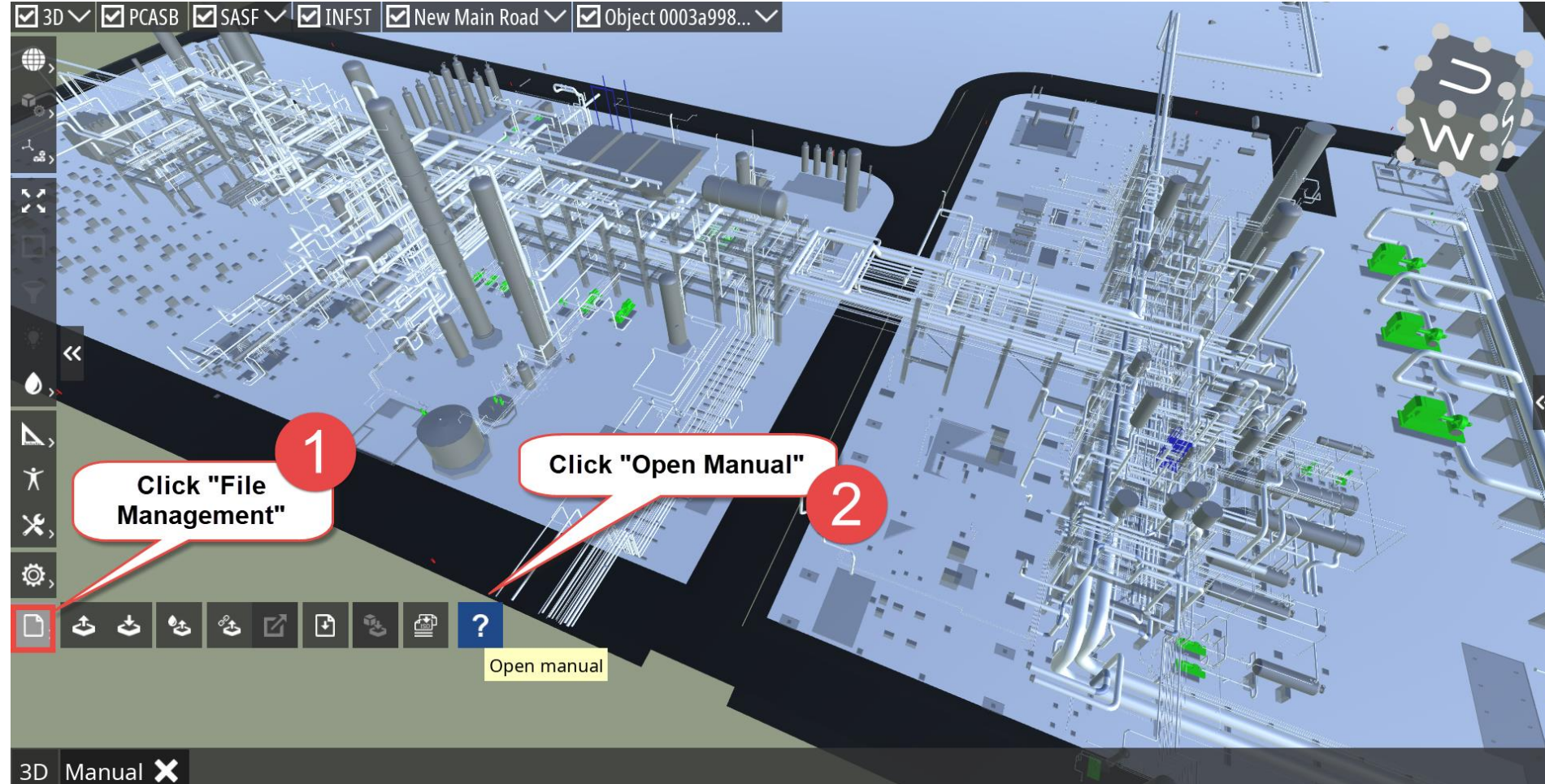
Copy current report definition

Customize report attributes

Save report to excel file

Filter

To switch back to 3D Model



PEDMS SUPPORT SERVICE CENTER



PETRONAS

SMART SOLUTIONS PETRONAS Engineering Data Management System



ict.servicedesk@petronas.com.my

Thank you for your passion!



PETRONAS